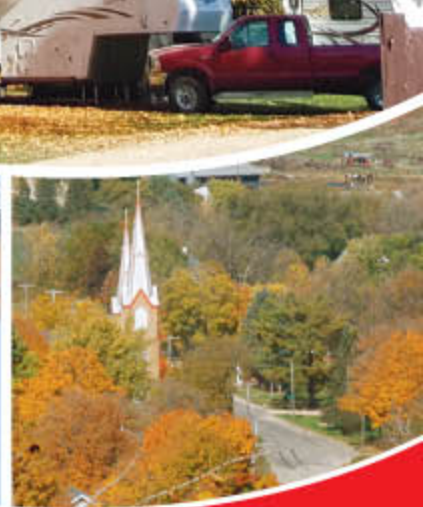
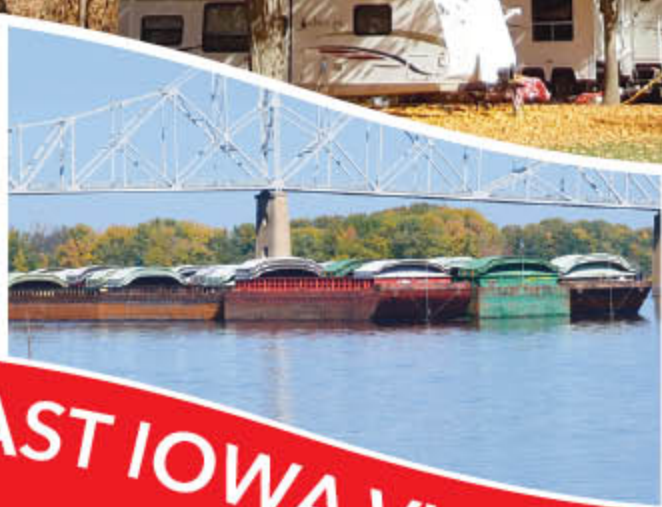


FREE

# EXPLORE . . .

Find the *beauty* and *wonder*  
in Iowa's Driftless Region



## NORTHEAST IOWA VISITORS GUIDE 2020

ALLAMAKEE | CLAYTON | FAYETTE | WINNESHIEK COUNTIES





As you look for activities in and around the counties,  
look no further than the

**Calmar Courier**  
Community News. Community Service.

POSTVILLE  
*Herald*

**The Outlook**

“As you turn the pages of our publications you'll find the most up to date news anywhere. You can find us online at **[calmarcourier.com](http://calmarcourier.com)**, **[outlooknewspaper.com](http://outlooknewspaper.com)** or **[postvilleherald.com](http://postvilleherald.com)**, on Facebook, or at newsstand locations throughout the area.

We're thrilled you've chosen to visit northeast Iowa and look forward to another visit in the very near future.

In the mean time, stay in touch!

Pam DeVries,  
*President*  
*Mid-America Publishing Corporation*

**CALMAR COURIER**

110 N. Maryville Street  
Calmar, IA 52132  
(563) 562-3488

**POSTVILLE HERALD**

101 N. Lawler Street  
Postville, IA 52162  
(563) 864-3333

**THE OUTLOOK**

104 W. Center Street  
Monona, IA 52157  
(563) 539-4554

# CONTENTS

## 2 **Visitor Resources**

City of Calmar  
City of Monona  
City of Postville

3 Explore the City of Calmar

6 Explore the City of Monona

8 Explore the City of Postville

10 School Districts

## 10 **Attractions**

12 Effigy Mounds National Monument

13 Fort Atkinson State Preserve

15 Laura Ingalls Wilder Park & Museum

16 Spook Cave

17 Pikes Peak State Park

18 Mississippi River National Wildlife Refuge

21 Pikes Peak State Park

21 Northeast Iowa Golf Courses

23 Northeast Iowa Hunting

25 Trout Streams

## 28 **Hospitality**

28 Places to Stay

29 Breweries & Wineries

29 Places to Eat



### COVER PHOTOS

The beauty of northeast Iowa is shown with its fall colors, majestic wildlife, river culture and beautiful bluffs and valleys.

*Photos by Mid-America Publishing staff*

Produced by Mid-America Publishing  
February, 2020  
9 Second Street NW  
Hampton, IA 50441  
641-456-2585



## **Welcome to Northeast Iowa!**

This guide will give you a glimpse of the people, places and experiences here in Northeast Iowa, and, specifically, the counties of Allamakee, Clayton, Fayette and Winneshiek. We offer many opportunities for outdoor fun, many along the beautiful Mississippi River, as well as, other lakes and rivers.

The rolling bluffs provide perfect sites for camping, fishing, hiking and bike riding. Swimming at area aquatic centers, and golfing at several beautiful golf courses are excellent ways to spend an afternoon.

Each of the counties offer many parks, and recreational areas including, but certainly not limited to, the Gilbertson Nature Center, the Osborne Nature Center, Pikes Peak State Park and the Volga River State Recreation Area.

History is preserved in museums in each of our counties. Museums in Monona, Strawberry Point, and Decorah showcase our heritage and ethnicity. Postville, known as 'Hometown to the World' has residents from over 20 countries as well as, a large community of ultra-orthodox Jews. They invite visitors to their Jewish Welcome Center and Kosher Market.

There is also dining at its finest at several restaurants, cafes and coffee shops. Don't miss the wineries and breweries along the Mississippi River as well others throughout the area.

There are also several locally owned motels and bed and breakfasts for your overnight stays.

Each of our counties showcase a county fair, with the Big Four Fair in Postville celebrating its 100th anniversary June 19-21, 2020. To honor the occasion all entertainment and admission is free.

We have collaborated to make this visitor's guide a great way for you to enjoy and explore our area. We are sure it will help you discover where you want to visit and where you want to relax and play in beautiful Northeast Iowa.

Come often and stay a while. You will be glad you did.



# > VISITOR RESOURCES

## > CITY OF CALMAR

### **SERVICES**

CITY HALL  
563-562-3154

FIRE DEPARTMENT, EMERGENCY  
9-1-1; Non-Emergency: 563-562-3575

POLICE DEPARTMENT, EMERGENCY  
9-1-1; Non-Emergency: 563-562-3224

AMBULANCE, EMERGENCY: 9-1-1

CALMAR PUBLIC LIBRARY  
563-562-3010

### **UTILITIES:**

GAS  
Black Hills Energy, 888-890-5554

ELECTRIC  
Alliant Energy, 800-255-4268

PHONE, INTERNET, TV  
Mediacom, 855-633-4226

### **EDUCATION**

South Winneshiek Elementary/Middle  
School, Ossian, 563-532-9365

South Winneshiek High School  
563-562-3226

South Winneshiek CSD District Office  
563-562-3269

St. Teresa of Calcutta School  
Calmar Center, 563-562-3291

St. Teresa of Calcutta School  
Spillville Center  
563-562-3617

St. Teresa of Calcutta School, Preschool,  
563-562-1018

Northeast Iowa Community College  
800-728-2256, ext. 399

### **FAITH**

Calmar Lutheran Church  
200 North East Street, 563-522-3633

Calmar United Methodist Church  
208 West Main Street, 563-562-3033

St. Aloysius Catholic Church  
304 South Maryville Street  
563-562-3603

Trinity Lutheran Church  
306 West Clark Street, 563-562-3202

## > CITY OF MONONA

### **SERVICES**

CITY HALL  
563-539-2355

FIRE DEPARTMENT, EMERGENCY  
9-1-1; Non-Emergency: 563-539-2344

POLICE DEPARTMENT, EMERGENCY  
9-1-1; Non-Emergency: 563-539-4400

AMBULANCE, EMERGENCY  
9-1-1; Non-Emergency: 563-880-1020

MURPHY HELWIG LIBRARY  
563-539-2356

### **UTILITIES**

GAS  
Black Hills Energy, 888-890-5554

ELECTRIC  
Alliant Energy, 800-255-4268

PHONE, INTERNET, TV  
NEIT, 563-539-2122

### **EDUCATION**

MFL MarMac Elementary  
563-539-2032

MFL MarMac Middle School  
McGregor, 563-873-2250

MFL MarMac High School  
563-539-2031

MFL MarMac District Office  
563-539-4795

### **FAITH**

Faith Lutheran NALC  
19999 Pleasant Ridge Road  
563-539-8888

Living Faith United Methodist Parish  
702 South Main Street  
563-539-2988

St. Patrick's Catholic Church  
405 South East Street  
563-539-4442

St. Paul Lutheran Church  
401 South Egbert Street  
563-539-2230

## > CITY OF POSTVILLE

### **SERVICES**

CITY HALL  
563-864-7454

FIRE DEPARTMENT, EMERGENCY  
9-1-1; Non-Emergency: 563-864-7777

POLICE DEPARTMENT, EMERGENCY  
9-1-1; Non-Emergency: 563-864-3234

AMBULANCE, EMERGENCY  
9-1-1; Non-Emergency: 563-864-7250

POSTVILLE PUBLIC LIBRARY  
563-864-7600

### **UTILITIES**

GAS  
Black Hills Energy, 888-890-5554

ELECTRIC  
Alliant Energy, 800-255-4268 or

Allamakee-Clayton Electric  
Cooperative, 563-864-7611

PHONE, INTERNET, TV  
NEIT, 563-539-2122

### **EDUCATION**

Cora B. Darling Elementary  
563-864-7651

Postville Junior-Senior High School  
563-864-7651

Postville CSD District Office  
563-864-7651

### **FAITH**

Community Presbyterian Church  
106 South Reynolds Street  
563-864-3736

St. Bridget's Catholic Church  
135 West Williams Street  
563-864-3138

St. Paul Lutheran Church  
116 East Military Road  
563-864-7643

Synagogue: Achdus Yisroel  
1001 Aspen Avenue



# CALMAR



POPULATION 978

As of the 2010 census

## EXPLORE THE CITY OF CALMAR

**Calmar is a city in Winneshiek County. It is at the junction of U.S. Highway 52 and State Highways 150 and 24, both of which terminate in Calmar.**

Calmar was platted in 1854. It was named after Kalmar, a city in Sweden.

The settlement experienced growth in 1868 when the railroad was built through it. Calmar was incorporated on July 14, 1869.

Norwegians Thore P. Skotland and his family came to the area in the spring of 1850. Perhaps his heart was warmed by terrain that reminded him of the rugged beauty of Norway. Whatever his reason, he put his roots down in a piece of land two miles north of the town to be known later as Calmar, on a tract of land called the Rhuben Boe Farm. His descendants still occupy part of this land. A German settler in the southern part of the township had preceded Skotland, but nothing is known of him.

Skotland and his family, Calmar's first recorded settlers, were soon joined by others. In 1851, seven other

settlers arrived. In the period of the 1870s through the 1890s, Calmar showed a population gain from 700 to almost 1,100 people.

While the City of Calmar, continued to grow and flourish, Thore P. Skotland took on many new endeavors. One of those would be to become one of the three incorporators of Luther College in Decorah. He was also a member of its first Board of Trustees and a member of its first building committee. In 1874, he sold out and moved to Otter Tail County, Minn., where he died in 1903 at the age of 81.

Swedish-born Alfred Clark and his pals referred to the area as "Marysville" after a mining town they had admired in California. When

Thore P. Skotland and wife



it was found that another Marysville already existed in Iowa, another named had to be found for the town. Half a mile east was an area commonly referred to as "Whiskey Grove," where the flower brothers, two Canadian

traders, did business with Indians, soldiers and all others seeking "fire water." This was an area where bootleggers reportedly operated and always managed to evade the law of the time.

While some used this name to refer to the Calmar area at the time, it was actually never the name applied to the town location. There was debate between Englishmen and Norwegians on what name to choose, and they decided to let

*Continued on page 4*



## CALMAR

Landin and Clark decide, as they were Swedish and would not take either party's side. Their decision was to name the town Calmar, after Kalmar Sound on the southeast coast of Sweden. This had been Alfred Clark's original hometown.

Calmar, at one time, was a major railroad hub of the Milwaukee Road between Marquette and Mason City. Passenger trains ran on this line up until sometime in the 1960s. These passenger trains ran between Madison, Wis. and into South Dakota. At Madison, there were connections with other passenger trains, including those going into Milwaukee and Chicago. In addition to hauling passengers, these trains handled express shipments for all the stops along the line. There was also a direct line running northwest to Austin, Minn.

The station in Calmar was staffed 24 hours a day, every day of the year. There was a station agent, clerks and



▲ Calmar Depot

four operators to handle the station duties. The operators received train orders for each passing train and for the trains originating in Calmar.

Fortune smiled on Calmar, in 1868, when it became the eastern terminus and junction with the main line for the I & D branch of the Milwaukee and St. Paul Railroad, which was built as far as New Hampton. This added value to Calmar's location, and in 1869, the train terminal was transferred from Conover, Iowa to Calmar. Decorah

was happy and held a sizeable celebration at Luther College, which was now a few years old and going strong. The stagecoach was no longer needed and the county seat had access to railroad facilities.

The facilities in Calmar included a well-equipped freight depot and a passenger depot with a hotel. Passengers could get meals and lodging as well as train tickets at the hotel.

*Continued on page 5*

**LOVE YOUR LOCAL**

...restaurant, shop, bank. Beyond providing banking solutions, we also take pride in giving back to the people who work to make this area so great. Why? Because this isn't just home to us. It's home to ALL of us.

As your hometown bank, we know when we do our part, we can make our community better for everyone.

**FIDELITY**  
BANK & TRUST

We're proud to be  
**YOUR HOMETOWN BANK!**

**MEMBER**  
**FDIC**

www.bankfidelity.bank | 319.352.6000

**CAFÉ HOPE**  
PRESENTS  
**Carbon Cannabis**

Check out our new Full Spectrum CBD Oil Tinctures from Carbon Cannabis! These are all local, Wisconsin grown, harvested and produced!

MENTAL HEALTH ADDICTION  
VET AFFAIRS POVERTY  
HUNGER ANIMAL RESCUE

Same strengths and prices as the CannaBizDepot brand but new flavors!  
*Grape • Natural • Peanut Butter • Peppermint*

Stop into Café Hope for more information about Carbon Cannabis!

120 N Beaumont Rd  
Prairie Du Chien, WI 53821  
**608-306-3350**

**CAFÉ HOPE**  
FRESH, LOCAL AND MAKING A DIFFERENCE





▲ **Lake Meyer Park and Campground** > Calmar

Plans for a 10-stall roundhouse were completed in 1911. Once this was built, large engines could be switched to fall another direction by use of the turntable. There were also pits within the roundhouse that allowed workers to do repairs under

the engines. East of the roundhouse, a tall coal chute provided fuel for the steam engine fires, and a nearby water tower and pump house kept water readily available for direct connection to the engine.

Calmar is home to one of two campuses of Northeast Iowa Community College. South Winneshiek High School is in Calmar. Its elementary and middle schools are in Ossian. St. Teresa of Calcutta School has a Calmar center.

Lake Meyer Park and Campground is located northeast of Calmar off Highway 24. The lake covers 38 acres and offers opportunities for fishing, boating, and canoeing or kayaking. A network of trails offers hiking, and picnic shelters and a playground make it the perfect spot for family gatherings and events. The campground does not accept reservations. It is generally open from April through October, depending on weather. Lake Meyer Park is open year round, though road access to the Nature Center is not always maintained in the winter. Road access to the lake for ice fishing is maintained throughout the winter. ■

## Proud to serve Northeast Iowa!

*Your local provider of...*

- Local and Long Distance Telephone
- Digital Television
- Broadband Internet
- Phone Systems
- Computer Services

Services in...

Monona  
Farmersburg  
Luana  
Postville  
St. Olaf  
& More

800 S. Main St., Monona, IA 52159  
www.netel.com • 563-539-2122

## Winneshiek County Fair

July 14-18, 2020

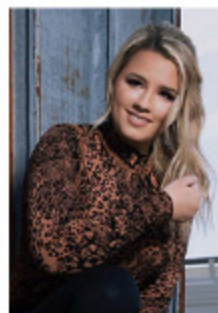
**Tuesday:**  
Upper Iowa Stock  
Car Racing

**Wednesday:**  
Rodeo

**Thursday:**  
NPTA Tractor Pull

**Friday:**  
TBD

**Saturday:**  
Jordan Davis w/  
Gabby Barrett







POPULATION 1,549

As of the 2010 census

## EXPLORE THE CITY OF MONONA

The name Monona is of American Indian origin. The community was organized in 1916. At that time Monona contained a public house, two stores and several mechanic shops.

Monona is located in the geological area known as the "Driftless Area", sitting atop the Paleozoic Plateau.

The city is surrounded by abundant natural resources such as Pikes Peak, the Effigy Mounds and the Yellow River Forest, all nearby just a short drive away. Monona has been recognized as Iowa's first "Garden City of Iowa" since 1931 and the "Gateway to the Yellow River Forest." Along with its wooded hills and prairies and farm fields, the City of Monona sits on one of the highest locations in Clayton County at more than 1,200 feet in elevation. It sits atop four main watersheds for the Turkey River, Bloody Run, and Yellow River.

Year-round recreational and sporting activities include

camping, canoeing and kayaking; fishing and ice fishing; hunting; snowmobiling, snowshoeing and cross-country skiing; hiking; biking or motorcycling; and, much more.

The city, donors, and volunteers built the area's first all-inclusive handicapped-accessible children's playground at City Park. It is the only park of its kind in the area. This park provides stimulating, educational, entertaining and playful opportunities for tri-state children of all ages and abilities, some of whom may be discovering for their very first time the ability to play alongside all other children in a state-of-the-art, safe and secure playground setting.

The MFL MarMac Community School District provides outstanding K-12 education for about 800 students in two locations. Jointly,



▲ Butterfly Garden > Butterfly Trail.

the cities of Monona and McGregor and school district provide excellent day care facilities. Head Start offers programs for preschool children in Monona.

Continued on page 7





▲ Hand-carved wooden chains > Monona Historical Museum

The city features four beautiful parks with butterfly and flower gardens; woodland and prairie trails; all-inclusive children's playground; picnic tables, shelters, charcoal grills; old-fashioned city park band shelter; a basketball court transformed into a

community ice skating rink. Gateway Park features both campsites and a combined restroom and shelter facility that were renovated in 2019. The park will be home to the area's newest playground. The park is connected to the Monona Family

Aquatic Center and Butterfly Garden via the Butterfly Trail that was built in 2018 with state grant money.

Monona is also home to the largest-known display of hand-carved wooden chains, plus interesting, local, historic artifacts at Monona Historical Museum.

The all-volunteer Monona Fire Department and M-F-L Ambulance Service are equipped with modern equipment. The ambulance service purchased its newest rig in 2019 and the Volunteer Fire Department will place a new rescue truck into service in 2020. Law enforcement is performed by three full-time police officers of the Monona Police Department who are responsible for Monona's consistently-low crime rate.

Notable people who call Monona their hometown are Leighton Abel, Iowa State politician and businessman; photographer Alexander Gardner and retired National Basketball Association star Raef LaFrenz. ■

## Family Dentistry



### Services Include:

CEREC – One Appointment Crowns | Bridges  
Teeth Whitening Options | Routine Check-ups  
Dentures & Denture Repair | Extractions | Cosmetic  
Dentistry | Advanced Hygiene Care | Invisalign  
Fillings | Other Services Available!

### Hours:

Mon-Fri: 8am-5pm | Sat: Appointments Available

**Family Dentistry**  
Associates of Monona  
602 Tower St. Monona, IA 52159



*A Hidden Gem snuggled in the rolling hills of Northeast Iowa*  
**Tri-City Golf**



Come join us for a round of golf or make plans to hold your next event at our venue with a "country view"

### Contact us at:

563-539-4435

or [tricitygolf@netel.net](mailto:tricitygolf@netel.net) or

Check us out on Facebook or [golfrtricity.net](http://golfrtricity.net)

16739 Diplomat Rd. Luana, Ia 52156



# POSTVILLE



POPULATION 2,227

*As of the 2010 census*

## EXPLORE THE CITY OF POSTVILLE

**Known as the “Hometown to the World,” Postville contains a diverse ethnic population that includes people of Jewish, Hispanic, Russian, Ukrainian, Somalian, Filipino and Norwegian heritage.**

The diversity in Postville is reflected in the local authentic restaurants, businesses and neighborhoods.

Postville was platted in 1853, and was named for Joel Post, a pioneer settler.

In 1987, a group of Hasidic Jews started a kosher slaughterhouse called Agriprocessors. The founders of the plant came from New York City. At its peak, there were about 100 Orthodox Jewish families in Postville.

After numerous accusations of mistreatment of cattle, pollution, and violations of labor laws, the facility was raided by the federal government in May 2008, resulting in hundreds of arrests of undocumented workers. Agriprocessors filed for bankruptcy on Nov. 5, 2008; the plant was bought at auction in July 2009 by

SHF Industries and has resumed production under the new name Agri Star. After the 2008 raid the number of Orthodox Jews declined, and in 2017 there were about 50 Orthodox Jewish families. Postville has services for Jewish families typically seen in larger communities. Postville also has a Jewish elementary school and a yeshiva. A Judaic Welcome Center and library opened in 2019.

In 2017 about one quarter of Postville’s population was made up of recent immigrants from Latin America and Somalia.

As of 2017, 700 people, more than 30 percent of the total population, work at Agri Star; about one hundred are of Somali origins.

Postville is also the home of a composites factory, Norplex-Micarta, started in 1975. The Norplex factory produces laminated plastics plate,

sheet, and profile shapes. As of 2007, it employed between 150 and 200 workers.

The Postville Community School District operates public schools for children grades K-12 in Postville, Castalia and Frankville.

Mesivta of Postville is the area yeshiva for area Jewish children.

Visitors to Postville may tour the John R. Mott House, a two-story Victorian style house which was the home of the 1946 Nobel Peace Prize winner, John R. Mott and the other historic places in Postville.

Children and adults alike may enjoy visiting the Northeast Iowa Wellness and Recreation Center for a pick-up game of basketball, swimming at the city pool and picnicking at the local parks in town.

*Continued on page 9*



Turner Hall was constructed in 1913 and shows the predominance of the German-American settlement; located at 119 East Green Street, it was added to National Register of Historic Places in 2000.

Clinton F. Meyer Park is located on the northwest side of Postville on Murdock Street. Playground equipment, a basketball court, shelter and portable rest rooms are available. (Free Admission)

Roberts' Park is located adjacent to the business district in Postville, the area is lighted by decorative globe lights and contains picnic tables and benches for relaxation. (Free Admission)

Lull's Park is located on the east side of Postville. The park contains playground equipment, shelters with electricity, grills and tables, rest rooms, swimming pool and ice-skating rink. An extension of Lull's Park has been improved to include a nature/walking trail. Handicap accessibility. (Free admission) •



## POSTVILLE



▲ Postville Globe ▶ Northeast Iowa RC&D

## Local Banking for the Community

*We all call Home*

Serving and supporting our  
communities in beautiful Northeast Iowa

**FreedomBank**

YOUR Community. YOUR Finances. YOUR STYLE.

ELKADER • MONONA • POSTVILLE  
WAUKON • DECORAH

[www.freedombnk.com](http://www.freedombnk.com)

Member FDIC



**HELPING BUILD A BETTER FUTURE -  
A BETTER WAY OF LIFE -  
FOR ALL US US.**

We are proud to be part of Iowa's growth by supplying Cat equipment. CLAAS and AGCO equipment, and parts and service to industries throughout the area.

**Ziegler - Since 1914, and the commitment stands strong.**

Postville  
308 N. Lawler St.  
**563-864-7461**

**ZIEGLER**   
[www.zieglercat.com](http://www.zieglercat.com)



## > SCHOOL DISTRICTS

### **CENTRAL, ELKADER - Clayton County**

Serving: Elkader, Elkport, Garber, Saint Olaf, Volga City  
Phone: 563-245-1750

### **CLAYTON RIDGE - Clayton County**

Serving: Garnavillo, Guttenberg, Clayton, Osterdock, North Buena Vista  
Phone: 563-252-2341

### **DECORAH - Winneshiek County**

Serving: Decorah, Frankville, Hesper, Bluffton, Burr Oak  
Phone: 563-382-3643

### **EASTERN ALLAMAKEE - Allamakee County**

Commonly referred to as Kee  
Serving: Lansing, New Albin  
Phone: 563-538-4201

### **EDGEWOOD-COLESBURG - Clayton County**

Serving: Colesburg, Edgewood  
Phone: 563-926-6412

### **MFL MARMAC - Clayton County**

Serving: Marquette, McGregor, Monona, Farmersburg, Luana  
Phone: 563-539-2031

### **NORTH FAYETTE VALLEY - Fayette County**

Serving: Alpha, Clermont, Elgin, West Union, Fayette, Hawkeye, Wadena  
Phone: 563-422-3851

### **OELWEIN - Fayette County**

Serving: Oelwein, Hazleton, Stanley  
Phone: 319-283-2731

### **POSTVILLE - Allamakee County**

Serving: Postville  
Phone: 563-864-7651

### **SOUTH WINNESHIEK - Winneshiek County**

Serving: Calmar, Festina, Ossian, Spillville  
Phone: 563-562-3269

### **STARMONT - Fayette County**

Serving: Arlington, Lamont, Strawberry Point  
Phone: 563-933-2218

### **TURKEY VALLEY - Winneshiek County**

Serving: Fort Atkinson, Jackson Junction, Lawler, Little Turkey, Protivin, Saint Lucas, Waucoma  
Phone: 563-776-6011

### **WAUKON - Allamakee County**

Serving: Waukon, Harpers Ferry, Waterville  
Phone: 563-568-3466

### **WEST CENTRAL - Fayette County**

Serving: Maynard, Randalia, Westgate  
Phone: 563-637-2283

## > ATTRACTIONS

### **ALLAMAKEE COUNTY FAIR**

**705 Allamakee Street, Waukon**  
**July 8 - 12 | Admission fees charged**  
**[www.allamakeecountyfair.org](http://www.allamakeecountyfair.org)**

Annual event featuring 4-H and FFA livestock and non-livestock shows and judging, live stage entertainment and other grandstand events. Last year's fair featured a tractor pull, motocross event and rogue rodeo. The 2020 Allamakee County Fair entertainment schedule had not been announced when this publication went to print.

### **BIG FOUR FAIR**

**327 North Maple Street, Postville**  
**June 19-21 | Free Admission**  
**[www.facebook.com/Big-Four-Fair-Postville-IA-108542219178696](http://www.facebook.com/Big-Four-Fair-Postville-IA-108542219178696)**

Annual event featuring 4-H and FFA livestock and non-livestock shows and judging, open exhibits, contests and other events. Held at the Big Four Fairgrounds in Postville.

### **WINNESHIEK COUNTY FREEDOM ROCK**

**206 Henry Street, Calmar**  
**Open Daily | Free Admission**  
**[www.thefreedomrock.com/iowa-fr-tour-info/](http://www.thefreedomrock.com/iowa-fr-tour-info/)**

Freedom Rocks are large boulders that are being placed in each of Iowa's 99 counties to provide a special thank you to veterans. Artist Ray Sorensen II was inspired by the movie "Saving Private Ryan" to paint his first Freedom Rock in Menlo, Iowa. One of two northeast Iowa Freedom Rocks is located in Calmar, on Henry Street, just west of the Kwik Star convenience store. Clayton County's rock was completed last year in Guttenberg. Allamakee and Fayette County Freedom Rocks will be painted in upcoming years, with Fayette County's rock in Fayette and Allamakee's in a location that has not yet been announced.





### CASINO QUEEN MARQUETTE

**100 Anti Monopoly Street, Marquette**  
**Open 9 a.m. - 2 a.m. weekdays**  
**24 hours Friday-Saturday**  
[www.casinoqueen.com/marquette](http://www.casinoqueen.com/marquette)

Rural northeast Iowa's only casino is located along the Mississippi River just off Highway 18 in Marquette. It features slot machines, table game and video poker as well as several dining options.

### CASSVILLE CAR FERRY

**Oak Road, Guttenberg**  
**Open Seasonally | Fees Apply**  
[www.cassville.org/ferry.html](http://www.cassville.org/ferry.html)

The Cassville Ferry has been connecting northeast Iowa with Cassville, Wis. since 1833. Today it connects the Great River Road near Cassville, Wis. with Iowa's Great River Road near Millville and is the only operating car ferry in northeast Iowa. Enter 35998 Oak Road, Turkey River, Iowa in your GPS to find the Iowa ferry dock.

### CLAYTON COUNTY FAIR

**26143 Ivory Road, National**  
**August 5 - 9 | Admission fees charged**  
[www.claytoncountyfair.com](http://www.claytoncountyfair.com)

Annual event featuring 4-H and FFA livestock and non-livestock shows and judging, live stage entertainment, a carnival, bull bash, truck and tractor pull and demolition derby. The 2020 entertainment schedule had not been released as of the printing of this guide.



▲ Demolition Derby

Motocross ▼



### DRIFTLESS AREA EDUCATION & VISITOR CENTER

**1944 Columbus Road, Lansing**  
**Open weekdays, 8 a.m. - 4:30 p.m.; Saturday, 10 a.m. - 4 p.m.; Sunday, 11 a.m. - 4 p.m.**  
[www.allamakeecountyconservation.org/driftless-center](http://www.allamakeecountyconservation.org/driftless-center)

The Driftless Area Education and Visitor Center features exhibits focused on the cultural, recreational, natural and historical significance of the Driftless Area. The 10,000-foot center is located along the Mississippi River, just below the river bluffs that are unique to the Driftless Area. The center is owned and operated by the Allamakee County Conservation Board.

### DRIFTLESS AREA WETLANDS CENTRE

**509 Highway 18, Marquette**  
**Open April - October, Tuesday - Saturday, 11 a.m. - 4 p.m. | Admission is free**  
[www.driftlessareawetlandcentre.com/](http://www.driftlessareawetlandcentre.com/)

The Driftless Area Wetland Centre is located just one mile from the Mississippi River along Highway 18 and features a small wetland as well as exhibits about local fish and wildlife. The center is owned by the City of Marquette and run by a board of directors that includes representatives from the MFL MarMac School District.

**24 HOUR EMERGENCY SERVICES**

**Urgent Care Available Daily • 563-568-3411**

**Veterans Memorial Hospital**  
WAUKON, IOWA • (563) 568-3411  
"Exceptional Care by Exceptional People... Right Here at Home"





▼ Effigy Mounds Trail > Harpers Ferry

▲ Mounds of the Marching Bear Group



#### EFFIGY MOUNDS NATIONAL MONUMENT

**151 Highway 76, Harpers Ferry**  
**Grounds open daily, Sunrise - Sunset**  
**Visitor Center opens daily, 8:30 a.m. - 4:30 p.m.**  
**Free admission**  
**Guided tours available during summer months**  
**[www.nps.gov/efmo/index.htm](http://www.nps.gov/efmo/index.htm)**

Iowa's only National Monument, Effigy Mounds preserves more than 200 prehistoric mounds built by native Americans. Many mounds are in shapes of animals, including bears and birds. The site features a visitor center staffed by National Parks Service employees as well as 14 miles of hiking trails. Guided hikes are available during summer months. The visitor center is located just off Highway 76 between Harpers Ferry and Marquette.



Healthcare for  
*Life.*

At Crossing Rivers Health, we know patient-centered, quality healthcare can transform lives. From our birthing center to our clinics, inpatient care, and hospice—our team of experts will care for you and your family through every step of your journey.

**PRIMARY CARE CLINICS | SPECIALTY CARE**  
**URGENT CARE | EMERGENCY CARE**  
**OBSTETRICAL CARE | MEDICAL IMAGING**  
**REHABILITATION | SURGERY | HOSPICE**

Offering over 100 services – right here, close to home.

## Crossing Rivers Health

Prairie du Chien, WI | 608.357.2000  
[crossingrivers.org](http://crossingrivers.org)



**T&K Cahoon**

**102 N Main St., Monona, Iowa 52159**  
**563-539-4624**

*Your local NAPA Stocks Auto Parts, Tools and Equipment and many other items for heavy duty trucks, marine and farming equipment.*

**Stop in Today!**





▲ Fort Atkinson front view



▲ Fort Atkinson interior view

Wide view ▼



**FORT ATKINSON STATE PRESERVE**

**303 Second Street NW, Fort Atkinson**  
**Open year-round**  
**Interpretive audio tour available online.**  
**Available by appointment only**  
[www.iowadnr.gov/Places-to-Go/State-Parks/Iowa-State-ParksParkDetails/ParkID/4](http://www.iowadnr.gov/Places-to-Go/State-Parks/Iowa-State-ParksParkDetails/ParkID/4)

Fort Atkinson was built in the 1840s to keep the Winnebago Indians on neutral ground. Today the fort still stands as the primary attraction at the Fort Atkinson State Preserve. The site hosts the annual Fort Atkinson Rendezvous the final weekend of September.



▲ Rendezvous Days > Fort Atkinson

**FAYETTE COUNTY FAIR**

**504 South Vine Street, West Union**  
**July 21 - 25 | Admission to grounds is free**  
**Admission charged for grandstand events**  
[www.fayettecoiafair.com](http://www.fayettecoiafair.com)

Annual event featuring 4-H and FFA livestock shows, live stage entertainment, a carnival, stock car races and a demolition derby. The 2019 fair featured a horseshoe pitching tournament, the IMCA Deery Brothers Summer Series for late model stock cars, school bus races and stage entertainment.




**The Wilder Memorial Museum** has frequently been described as a "hidden treasure". Experience it for yourself!

You will find *unique* items everywhere!

Over 700 *dolls* are now on display dating from the 1750's.

LIKE US ON FACEBOOK 

*The Wilder Memorial Museum staff and volunteers look forward to making your visit comfortable, convenient, and fun!*



Memorial Day through Labor Day  
 Sunday through Thursday:  
 1 PM - 4 PM  
 Friday and Saturday:  
 10 AM - 4 PM  
 Weekends Only  
 In September and October  
 By Appointment  
 Call Museum at (563) 933-4615  
 Group Rates Available  
 Handicap Accessible



**WILDER**  
 MEMORIAL MUSEUM  
 123 W Mission Street  
 Strawberry Point, Iowa  
[www.WilderMuseum.org](http://www.WilderMuseum.org)



### FROELICH GENERAL STORE & TRACTOR MUSEUM

24397 Froelich Road, McGregor  
Open daily, except Tuesdays and Wednesdays,  
May 9 - Sept. 27, 10 a.m. - 5 p.m.  
Admission fee charged  
[www.froelichtractor.com](http://www.froelichtractor.com)

The Froelich General Store and Tractor Museum celebrates the location where John Froelich invented the first gasoline-powered tractor that could propel itself both forward and backwards. It features replica of Froelich's historic first tractor as well as a small historic village with a general store, one-room schoolhouse, warehouse and blacksmith shop, railroad depot and several other buildings. Tours are available.

### GEORGE MAIER HERITAGE CENTER

1000 Mascara Road, Elkader  
Open weekends, May - October  
Admission fee charged  
[www.silosandsmokestacks.org/attraction/maier-heritage-center](http://www.silosandsmokestacks.org/attraction/maier-heritage-center)

Located in a restored 1919 sale barn, the George Maier Heritage Center features historical pieces showing what Midwest life was like in the middle of the 18th century.

### GILBERTSON CONSERVATION EDUCATION CENTER

1810 Agate Road, Elgin  
Nature Center open Memorial Day to Labor Day,  
Wednesday - Sunday, 11 a.m. - 7 p.m.  
Open other times by appointment only  
Free admission. Camping fees apply  
[www.elginiowa.org/GILBERTSON.html](http://www.elginiowa.org/GILBERTSON.html)

The Gilbertson Conservation Education Center is a 345-acre park featuring primitive and modern campgrounds, a nature center, historic buildings, trails suitable for hiking, walking and horseback riding and a petting zoo. The center is operated by the Fayette County Conservation Board.

### CLAYTON COUNTY FREEDOM ROCK

519 North Third Street, Guttenberg  
Open Daily | Free admission  
[www.thefreedomrock.com/iowa-fr-tour-info/](http://www.thefreedomrock.com/iowa-fr-tour-info/)

Freedom Rocks are large boulders that are being placed in each of Iowa's 99 counties to provide a special thank you to veterans. Artist Ray Sorensen II was inspired by the movie "Saving Private Ryan" to paint his first Freedom Rock in Menlo, Iowa. One of two northeast Iowa Freedom Rocks is located in Guttenberg on Third Street near the municipal swimming pool. Allamakee and Fayette County Freedom Rocks will be painted in upcoming years, with Fayette County's rock in Fayette.

## Waukon Dental



#### Services Include:

CERC – One Appointment Crowns | Bridges  
Teeth Whitening Options | Routine Check-ups  
Dentures & Denture Repair | Extractions | Cosmetic  
Dentistry | Advanced Hygiene Care | Invisalign  
Fillings | Other Services Available!

#### Hours:

Mon-Fri: 8am-5pm | Sat: Appointments Available

### Waukon Dental

18 1st Ave NW, Waukon, IA 52172  
(563) 568 - 4528



### IOWA DNR FISH HATCHERY

331 South River Park Drive, Guttenberg  
Open Daily, 8 a.m. - 4:30 p.m. | Free admission  
[www.iowadnr.gov/About-DNR/DNR-Staff-Offices/Fish-Hatcheries](http://www.iowadnr.gov/About-DNR/DNR-Staff-Offices/Fish-Hatcheries)

The Guttenberg Fish Hatchery is one of eight hatcheries run by the Iowa Department of Natural Resources. Each spring, the hatchery produces northern pike that are stocked statewide. The hatchery also features an aquarium with fish common to the area including catfish, walleye, northern pike, sunfish, bluegill and bullheads.



### IOWA'S DAIRY CENTER

1527 Highway 150, Calmar  
Open weekdays, 7:30 a.m. - 4 p.m.  
Free to visit; Fees apply for tours  
[www.iowadairycenter.com](http://www.iowadairycenter.com)

The Iowa Dairy Center works with the Northeast Iowa Dairy Foundation to bring education, demonstration and research to aid the growth and prosperity of area dairy farmers. The center features classrooms and labs as well as a milking parlor, robotic milking system and barns.

### LAURA INGALLS WILDER PARK & MUSEUM

2603 236th Avenue, Burr Oak  
Season begins May 1; Open 10 a.m. - 4 p.m.  
Admission fees charged  
[www.lauraingallswilder.us](http://www.lauraingallswilder.us)

The childhood home of "Little House on the Prairie" author Laura Ingalls Wilder that remains on its original site, the park and museum tell the story of Wilder's life as well as that of her family. The tour features stops at the visitor's center and the Masters Hotel, where the Ingalls lived and worked.



### LOCKMASTER'S HOUSE MUSEUM

Lock & Dam Lane, Guttenberg  
Open daily except Mondays, 12 - 4 p.m.  
Free admission  
[www.visitiowa.org/business/lockmasters-heritage-house-museum.html](http://www.visitiowa.org/business/lockmasters-heritage-house-museum.html)

The Lockmasters Heritage House Museum is located at Lock and Dam No. 10 in Guttenberg. This home, which is managed by the Guttenberg Heritage Society, is the last lockmaster house along the Mississippi still in its original location. It has exhibits about the construction of the lock and dam as well as exhibits showcasing Guttenberg's history.

### MONTAUK HISTORIC SITE

26223 Highway 18, Clermont  
Open Daily, Memorial Day through Labor Day, 12 - 4 p.m.; Open Friday - Sunday, Labor Day - October 31, 12 - 4 p.m. | Free admission  
[www.iowahistory.org](http://www.iowahistory.org)

The Montauk Historic Site, located just east of Clermont, features the home of Iowa's 12th governor, William Larrabee. Guided tours of this 1874 mansion are available.

### MOTOR MILL HISTORICAL SITE

23002 Galaxy Road, Elkader  
Open weekends, Memorial Day weekend - Second weekend in October, 12 - 5 p.m.  
Admission fee charged  
[www.motormill.org](http://www.motormill.org)

The Motor Mill Historic site, located eight miles southwest of Elkader, preserves the history of flour milling and wheat production in northeast Iowa. The site features a mill located along the Turkey River that operated from 1869-83 before being used as farm buildings until being purchased by the Clayton County Conservation Board in 1983. The exterior of the mill can be viewed at all times, though the interior can only be viewed during tours, which also go through related buildings at the site and the town.

**ACAPULCO** Mexican & American Cuisine  
608-326-0755  
Open 7 days a week  
11 a.m. - 10 p.m.  
37885 Selch Ave  
Prairie du Chien, WI  
Carry outs and reservations available  
Gift Certificates Available

**RESTAURANT & CANTINA**  
MEXICAN & AMERICAN CUISINE



### OSBORNE VISITOR CENTER

29862 Osborne Road, Elkader  
Open 8 a.m. - 4 p.m. Monday - Saturday; 12 - 4 p.m. Sundays | Free to visit  
[www.claytoncountyconservation.org/?page\\_id=894](http://www.claytoncountyconservation.org/?page_id=894)

The Osborne Center features a nature center, live animal exhibit, nature and hiking trails, picnic areas, an arboretum, fishing pond and a pioneer village. The Clayton County Conservation Board provides programming at the center throughout the year. The center annually hosts Osborne Heritage Days, which draw visitors from throughout northeast Iowa. The center also hosts an Iowa Welcome Center.

### SEED SAVERS EXCHANGE HERITAGE FARM

3074 North Winn Road, Decorah  
Season runs March - October  
Visitor Center open weekdays, 9 a.m. - 5 p.m.  
Trails/grounds open during daylight hours  
Tours available to groups of 15 or larger  
Free admission  
[www.seedsavers.org](http://www.seedsavers.org)

The Seed Savers Exchange Heritage Farm features a visitor's center, gift and garden trail as well as miles of hiking trails and an orchard. The farm annually grows nearly 1,000 varieties of seeds that are distributed to its customers. Annual events include an heirloom plant sale in May, a conference and campout in July, seed school and tomato tasting in August and the annual harvest festival in October.

### SKIP-A-WAY RESORT

3825 Harding Road, Clermont  
Fees Apply  
[www.skipawayresort.com](http://www.skipawayresort.com)

Skip-A-Way Resort features 180 campsites as well as a restaurant, playground, miniature golf course and swimming beach. Canoes, kayaks and tubes are available for rent, with a shuttle service available. A remodeled lodge will open in 2020.

### TURKEY RIVER RECREATION CORRIDOR AND ELKADER WHITEWATER COURSE

Clermont, Elgin, Elkader  
[www.turkeyrivercorridor.com](http://www.turkeyrivercorridor.com)  
[www.elkaderwhitewater.com/](http://www.elkaderwhitewater.com/)

The Turkey River Corridor runs from Clermont to Elkader and also passes through Elgin. The area features land and water trails as well as many opportunities for fishing. A highlight of the area is the Elkader Whitewater Course, which opened in 2013 and features opportunities for whitewater recreation normally only found in mountainous regions. Canoe, kayak and tube rentals are available in both Clermont and Elkader during warm-weather seasons.

### SPOOK CAVE

13299 Spook Cave Road, McGregor  
Open Daily, May - October, 9 a.m. - 5:30 p.m.  
Fees apply for tours and camping  
[www.spookcave.com](http://www.spookcave.com)

Located just off Highway 18 between Monona and Marquette, Spook Cave features a campground and guided boat trip through a cave along the hole at the base of the hill along Bloody Run Creek. Tours tell about the discovery and development of the cave and local rock formations.



*Fresh baked goods, breakfast sandwiches, lunch menu, wine bar and craft beers right on river in historic Lansing!*

60 S Front Street, Lansing, IA 52151 • [Coffeeontheriver@gmail.com](mailto:Coffeeontheriver@gmail.com)  
563-538-2899



Tastings • Event Center • Wedding Venue • Gifts • Wine Accessories • Tours by Appointment  
Full kitchen offerings from May 1st to October 31st  
Appetizers and soup year round  
Seasonal hours, see website for events

1966 337th St, Decorah, IA  
(10 miles North of Decorah)  
563-735-5809  
[www.winery.com](http://www.winery.com)  
[sales@winery.com](mailto:sales@winery.com)





▲ **Pikes Peak State Park** > McGregor

**PIKES PEAK STATE PARK**

**32264 Pikes Peak Road, McGregor**  
**Open daily | Free admission | Camping fees apply**  
[www.iowadnr.gov/Places-to-Go/State-Parks/Iowa-State-Parks/ParkDetails/ParkID/610141](http://www.iowadnr.gov/Places-to-Go/State-Parks/Iowa-State-Parks/ParkDetails/ParkID/610141)

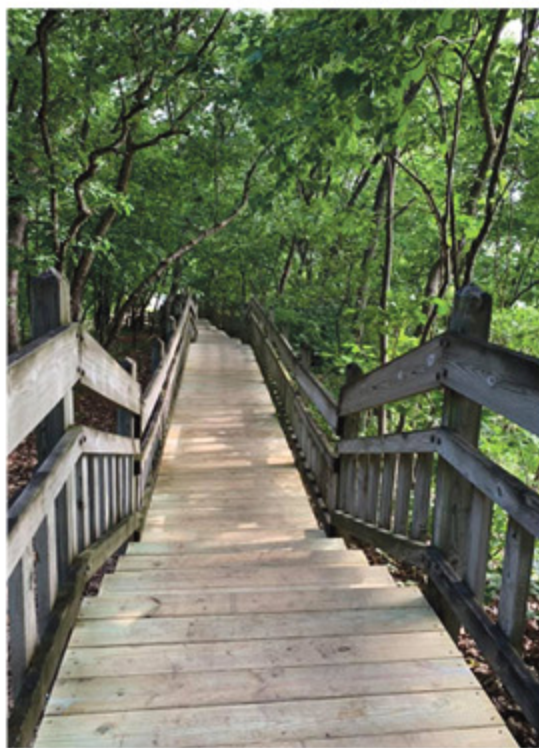
Considered to have some of the most beautiful views in Iowa, the park overlooks the Mississippi River at its confluence with the Wisconsin River. The park features more than 11 miles of trails as well as a modern camping area. Park accesses are just south of McGregor off Highway X-56 or River Road.

**STRAWBERRY HILL FARM & GARDEN**

**12173 Amission Road, Strawberry Point**  
**Open year-round by reservation only**  
**Admission fees apply**  
[www.facebook.com/pg/Strawberry-Hill-Farm-Garden-203987096319749/about/?ref=page\\_internal](https://www.facebook.com/pg/Strawberry-Hill-Farm-Garden-203987096319749/about/?ref=page_internal)

Strawberry Hill is a working dairy goat farm located just west of Strawberry Point. Guests will help feed the rabbits, bottle feed babies, milk goats and learn the history of the farm.

▼ **Pikes Peak Bridal Falls Trail**



**TD's**  
Sports Bar & Grill

Elkader, IA  
 203 S Main St Elkader IA  
 52043 563-245-2541

**Great Food,  
Great Drinks!**

**Stop by  
and see us!**

**4 Rooms filled with the latest Women/Jr Clothing, Accessories, Jewelry, Baby Boutique, Bath & Body products, Home & Garden Decor & so much more!**

Follow us on Facebook & Instagram!

107 W Bridge Street  
 PO Box 32  
 Elkader, IA 52043  
 563-245-3939

**BRIDGE STREET**  
BOUTIQUE & GIFT

Crafts, Clothing, Jewelry & More

Monday-Friday  
 10:00 am to 5:00 pm  
 Sunday 12:30-4:30





▲ Bald Eagle > Lock and Dam No. 10 in Guttenberg

**UPPER MISSISSIPPI NATIONAL WILDLIFE  
AND FISH REFUGE AND DRIFTLESS AREA  
NATIONAL WILDLIFE REFUGE**

**Allamakee and Clayton Counties**  
[www.fws.gov/refuge/Upper\\_Mississippi\\_River](http://www.fws.gov/refuge/Upper_Mississippi_River)  
[www.fws.gov/refuge/Driftless\\_Area/](http://www.fws.gov/refuge/Driftless_Area/)

The Upper Mississippi National Wildlife and Fish Refuge covers a 261-mile stretch of the Mississippi River, from southwest Minnesota to east central Iowa, including the Mississippi River segments along the eastern edge of Allamakee and Clayton Counties. The refuge features opportunities for sportsmen and sightseers alike to explore more than 240,000 acres that feature fish, wildlife and a breeding ground for migratory birds. Popular times in the refuge are the spring and fall migration periods.

The area also encompasses the Driftless Area National Wildlife Refuge, which includes 911 acres in northeast Iowa and southwest Wisconsin. This area is rugged, and only three small areas of it, all in Clayton County, are open to the public for limited hunting, fishing and wildlife photography and observation. See the refuge Web site for more details.

Headquarters for both the refuges are located in Prairie du Chien, Wisconsin.

**EXPLORE THE UPPER MISSISSIPPI RIVER NATIONAL  
WILDLIFE REFUGE**

**The Upper Mississippi River National Wildlife  
Refuge presents a unique feature for the region.**

Running 261 river miles from Wabasha, Minnesota to Princeton, Iowa, the refuge draws visitors from throughout the United States to see its unique wildlife and terrain.

Within the Refuge is the Driftless Area National Wildlife Refuge, which parts of an eight-county area of Iowa, Wisconsin and Illinois, including Allamakee and Clayton Counties. Five of the nine units of the Driftless Area NWR are located in Clayton County.

**Canoeing and Kayaking**

Paddling along the backwaters is an outstanding way to enjoy the Upper Mississippi River National Wildlife Refuge. Bring your fishing pole (and Iowa or Wisconsin fishing license) or a pair of binoculars and enjoy both the wildlife and beauty.

The Johnson Slough Canoe Trail is located in Pool 10 with access just south of McGregor. Follow Highway X56 south to the Sny Magill Unit of Effigy Mounds National Park and Sny Magill River access. This 6.1-mile trail is of moderate difficulty with paddling against the current about half the way.

Other trails are located on the Wisconsin side of the Mississippi River.

**Fishing**

Some of the world's best fishing can be found in the Upper Mississippi River National Wildlife Refuge. Whether you are fishing for walleye, bass, crappie, catfish, bluegill, northern pike or anything in between, Refuge areas located along Allamakee and Clayton County likely have it.

Though many people prefer fishing from boats, there are plentiful opportunities to catch fish from shore.

Walleye and sauger are two of the most sought after recreational fish on the river. There are good numbers of walleye ranging from 15 to 27 inches and sauger of 12 to 18 inches are plentiful. Bluegill populations are also healthy and provide some of the most consistent enjoyment due to their numbers. Catfish are also plentiful in to area, as are largemouth and smallmouth bass. Northern pike are also abundant in this part of the Mississippi River, with fish ranging up to 40 inches common.

Ice fishing is also popular along backwaters of the Mississippi River during colder months. Be sure to check ice conditions frequently to ensure safety. The Iowa Department of Natural Resources recommends that you ice fish only when new, clear ice is at least four inches thick and that ice must be at least five inches thick to support a snowmobile or ATV. It also advises to always ice fish with a friend.

A great resource for fishermen is the Iowa Department of Natural Resources' weekly fishing report that can be found at [www.iowadnr.gov/fishing/fishing-reports](http://www.iowadnr.gov/fishing/fishing-reports).

**Hunting**

Established in 1924, the 240,000-acre refuge provides for the needs of fish, wildlife and millions of annual visitors. The Upper Mississippi River is open to hunting.

*Continued on page 19*



Most hunting opportunities are in wetlands, on islands and in floodplain forest accessible mainly by boat.

More than 75 percent of the world's canvasback ducks use the Refuge for migration, while bluebills, bufflehead, gadwall, goldeneyes, mallards redheads and widgeon, and goldeneyes are also common in the refuge.

### Wildlife Viewing

The area is popular among bird watchers, particularly during the spring and fall migration seasons when thousands of birds make their way to and from their wintering grounds.

April and May are some of the best times to see songbird migration. Stop at a boat landing or river walk and use either spotting scopes (available at many locations along the Great River Road) or your own binoculars.

Fall is a popular time for visitors to come not only for the wildlife, but also to see spectacular fall colors that grace the steep cliffs of both Allamakee and Clayton Counties. Migrating tundra swans stop in the area in late October and early November and stay until the river begins to freeze. During peak fall migration in late October, hundreds of thousands of canvasbacks, common mergansers, goldeneyes, mallards, shovelers, blue-winged teal, and coots gather on the refuge.

Bald eagles are also common in the area. According to the National Fish and Wildlife Service, there are more than 250 active bald eagle nests within the refuge. In addition to the nesting eagles, many migrating eagles are seen on the refuge. The best area spot to see eagles is at or near Lock and Dam No. 10 in Guttenberg, though they are frequently seen anywhere along the refuge. ■

**Northeast Iowa Wellness and Recreation Center**

313 W Post St., Postville, Iowa  
(563) 864-9622  
www.neiawrc.org

NEIA  
W  
R C

LIKE US ON FACEBOOK



**Kwik Star**

Stop by your local Kwik Star today and try a Fresh Blends drink!

**NEW!**

**SMOOTHIES, LEMONADES & FRAPPES**



### VESTERHEIM NORWEGIAN-AMERICAN MUSEUM

**520 West Water Street, Decorah**  
**Open 9 a.m. - 5 p.m., May - October**  
**10 a.m. - 4 p.m., November - April**  
**Admission fees charged**  
**www.vesterheim.org**

Decorah's Vesterheim Norwegian-American Museum features more than 33,000 exhibits and 12 different buildings, including a folk art school and a library. The exhibits explore the diversity of American immigration from the perspective of Norwegian-Americans. Annual events include the Syttende Mai celebration in May, a folk-art banquet in July, a Norwegian Christmas celebration in December and participation in Decorah's Nordic Festival in July.



### VOLGA RIVER STATE RECREATION AREA

**10225 Ivy Road, Fayette**  
**Open Daily | Free admission**  
**Camping fees apply**  
**www.iowadnr.gov/Places-to-Go/State-Parks/Iowa-State-Parks/ParkDetails/ParkID/610134**

The Volga River State Recreation Area is located in Fayette County, just off Highway 150 north of Fayette. The area features opportunities for hiking, camping (both modern and primitive), boating, fishing and hunting.

### WINNESHIEK COUNTY FAIR

**Montgomery Street, Decorah**  
**July 9 - 13 | Admission to grounds is free**  
**Admission charged for grandstand events**  
**www.winneshiekcountyfair.org**

Annual event featuring 4-H and FFA livestock and non-livestock shows and judging, live stage entertainment, stock car racing, an NPTA-sanctioned tractor pull and a rodeo. 2020 entertainment had not been announced as of the printing of this guide.



**WINNESHIEK COUNTY HISTORICAL  
MUSEUM-LOCUST SCHOOL MUSEUM**

**1640 Big Canoe Road, Decorah**  
**Open weekdays, 10 a.m. - 4 p.m.**  
**[www.winneshiekcountyhistoricalsociety.com](http://www.winneshiekcountyhistoricalsociety.com)**

The Locust School is a restored 1854 schoolhouse typical of schools in the 19th and early 20th centuries. The school is home to the Winneshiek County Historical Society, which is currently restoring the building.



**YELLOW RIVER STATE FOREST**

**729 State Forest Road, Harpers Ferry**  
**Open daily | Free admission**  
**Camping fees apply**  
**[www.iowadnr.gov/Places-to-Go/State-Forests/  
Yellow-River-State-Forest](http://www.iowadnr.gov/Places-to-Go/State-Forests/Yellow-River-State-Forest)**

The Yellow River State Forest is located in southern Allamakee County, just southwest of Harpers Ferry. The Paint Creek Unit is the largest segment of the forest and is of greatest interest to the recreationalist. It features three campgrounds with nearly 170 campsites, miles of maintained trails that are accessible by foot, horseback and automobile. There is also a large segment of cross country skiing trails. A new Friends of the Yellow River State Forest group met for the first time in early March, 2018.



**A BETTER GAMBLE.**

**LOOSER SLOTS AND AMAZING DINING**

**ALWAYS A WINNING PAIR**



**GREAT TASTES FOR EVERY APPETITE**

*CasinoQueen.com*

Highway 18 W Marquette, IA

FOLLOW US!



© 2020 Casino Queen, Inc. Promotion valid only on the dates listed above. Must be 21 to enter the casino. No cash value. Does not include gratuity. Rules and promotions may vary. Complete rules and eligibility for promotions are available upon request. Management reserves the right to change or cancel events and promotions at any time without prior notification. Gambling a problem? There is help. And hope. Call 1-800-BET-OFF.





## ▶ POND AND LAKE FISHING

While northeast Iowa is better known for its trout and Mississippi River fishing, there are also limited opportunities for pond and lake fishing.

Many opportunities are at small farm ponds. The following listing is of public fishing areas only and does not include trout streams or the Upper Mississippi River Fish and Wildlife Refuge. Be sure to get landowner permission before fishing on private property. Iowa hunting regulations are available at [www.iowadnr.gov/fishing](http://www.iowadnr.gov/fishing).

### FAYETTE COUNTY

#### **Frog Hollow Lake** (Volga River State Recreation Area)

*Acre:* 138. *Maximum depth:* 22 feet. *Popular Species:* Black Crappie, Bluegill, Carp, Channel Catfish, Green Sunfish, Largemouth bass, White Sucker, Yellow Perch. *Amenities:* Boat access, Fishing jetty, Accessible Pier, Picnic Area, Trails, Playground, Restrooms, Camping, Good/Excellent Shore Fishing.

#### **Lake Oelwein**

*Acre:* 23. *Popular Species:* Bluegill, Carp, Channel Catfish, Largemouth bass, Rock Bass, White Sucker. *Amenities:* Picnic Area, Playground, Restrooms, Camping, Boat Ramp

### WINNESHIEK COUNTY

#### **Lake Meyer**

*Acre:* 38. *Maximum Depth:* 27 feet. *Popular Species:* Stocked with Northern Pike, Bluegill, Black Crappie, Largemouth Bass and Channel Catfish. Also features Carp and Yellow Perch. *Amenities:* 60-foot fishing jetty, shoreline access, handicap-accessible dock, boat ramp (electric motors only), fish habitat improvements, picnic shelters, camping and hiking trails.

#### **Sliver Springs Park**

*Acre:* 2. *Popular Species:* Stocked with Largemouth Bass, Bluegill, Crappie and Channel Catfish. *Amenities:* Bridge across pond, pit toilets and picnic areas.

### CLAYTON COUNTY

#### **Norwegian Lake**

*Acre:* 130. *Popular Species:* Bluegill, Blowfin, Carp, Freshwater drum, Largemouth bass, Northern Pike, Shortnose Gar, Yellow Perch. *Amenities:* None listed.

## ▶ EXPLORE NORTHEAST IOWA GOLF COURSES

Golf is one of America's favorite warm-weather activities and is popular in parts of Northeast Iowa. More than a dozen courses cover the area, with many providing picturesque views of the Driftless area's hills and valleys.

Information was taken from local and online sources.



### ▲ Big Rock Country Club ▶ Fayette

#### **BACKBONE GOLF AND COUNTRY CLUB**

**A:** 1244 400th Street, Strawberry Point **P:** 563-933-4545

**W:** Facebook/Big Rock Country Club Fayette IA

*Public nine-hole course. Opened in 1960. Par: 36. Length: 3,039 yards.*

#### **BIG ROCK COUNTRY CLUB**

**A:** 9684 146th Street, Fayette **P:** 563-425-3687

**W:** [bigrockcountryclub.org](http://bigrockcountryclub.org) **E:** [bigrockcountryclub@gmail.com](mailto:bigrockcountryclub@gmail.com)

*Semi-private 18-hole course. Opened in 1966. Par: 35-36 - 71 (36-36 from red tees). Length: 6,085/5,815/5,102 yards (blue/white/red)*

**Amenities:** Driving range; Clubhouse available for events

**Season:** Traditionally April 1 - October 31

#### **ELKADER GOLF AND COUNTRY CLUB**

**A:** 24361 Gunder Road, Elkader **P:** 563-245-2230

**W:** [elkadergolf.com](http://elkadergolf.com)

*Semi-private nine-hole course. Opened in 1964. Par: 35. Length: 2,897 yards.*

**Amenities:** Driving Range; Banquet facility

**Season:** April 1 - October 31



## HICKORY GROVE GOLF COURSE

Phone: 319-283-2674

1509 Outer Rd. • Oelwein, Ia 50662

Driving Range - Pro Shop - Nine Holes

[golfoelwein.com](http://golfoelwein.com) | Chris Black, PGA Professional



## GOLF COURSES

### GUTTENBERG GOLF COURSE

**A:** 28126 Highway 52, Guttenberg **P:** 563-252-1423

**W:** guttenberggolf.com

*Semi-private nine-hole course. Opened in 1963. Par: 36. Length: 3,187 yards.*

**Amenities:** Driving Range; Clubhouse available for banquets

### JACKSON HEIGHTS GOLF COURSE

**A:** 3249 Golf Course Lane, Jackson Junction **P:** 563-776-9181

**W:** jacksonheightsgolf.com

*Semi-private nine-hole course. Opened in 1992. Par: 36. Length: 3,169 yards.*

**Amenities:** Driving range

**Season:** April - October

### HICKORY GROVE GOLF COURSE

**A:** 1509 Outer Road, Oelwein **P:** 319-283-2674

**W:** lizzyrosellc.com **E:** prochrisblack@gmail.com

*Semi-private nine-hole course. Opened in 1915. Par: 36. Length: 3,485 yards.*

**Amenities:** Driving Range; Clubhouse available for events

**Season:** April 1 - October 31

### ONEOTA GOLF & COUNTRY CLUB

**A:** 1714 Golf Road, Decorah **P:** 563-382-4407

**W:** Facebook/Oneota Golf & Country Club **E:** oneotagolf@mchsi.com

*Semi-private 18-hole course. Opened in 1921. Par: 36-36 - 72. Length: 6,472 yards*

**Amenities:** Driving Range; Clubhouse available for events



### ▲ Elkader Golf and Country Club > Elkader

### PLEASANT VALLEY SPORTS CLUB & GOLF COURSE

**A:** 24749 Canoe Road, Clermont **P:** 563-423-7396

**W:** pleasantvalleysportsclub.com **E:** pvscgolf@gmail.com

*Public nine-hole course. Opened in 1993. Par: 36. Length: 3,095 yards*

**Amenities:** Driving Range; Banquet facility

### SILVERCREST GOLF & COUNTRY CLUB

**A:** 2772 College Drive, Decorah **P:** 563-382-5296

**W:** silvercrestgolf.com

*Semi-private nine-hole course. Opened in 1935. Par: 36. Length: 2,880 yards*

### SILVER SPRING GOLF & COUNTRY CLUB

**A:** 1302 County Road W42, Ossian **P:** 563-532-8904

**W:** Facebook/Silver-Springs-Golf-Club

*Semi-private nine-hole course. Opened in 1990. Par: 36. Length: 2,880 yards*

### SOUTH WINN GOLF AND COUNTRY CLUB

**A:** 2585 175th Street, Calmar **P:** 563-562-3191

**W:** swgolfandcc.com

*Semi-private nine-hole course. Opened in 1960. Par: 36. Length: 2,876 yards*

**Season:** April - Mid-November

### TRI-CITY GOLF CLUB

**A:** 16739 Diplomat Road, Luana **P:** 563-539-4435

**W:** golftricity.com **E:** TriCityGolf@netel.net

*Public nine-hole course. Opened in 1945. Par in 34. Length in 2,821 yards*

**Amenities:** Clubhouse available for events

### WAUKON GOLF AND COUNTRY CLUB

**A:** 308 First Street SE, Waukon **P:** 563-568-9939

**W:** waukongolfcc.com **E:** waukongolfcc@hotmail.com

*Semi-private 9-hole course. Opened in 1923. Par: 35. Length: 3,017 yards*

**Amenities:** Clubhouse available for rent

### WOODS EDGE GOLF COURSE

**A:** 504 W. Union Street, Edgewood **P:** 563-928-6668

**W:** woodsedgegolf.com

*Public nine-hole course. Opened in 1970. Par: 36. Length: 3,286 yards*



104 First Street NW  
Elkader, IA 52043  
563-245-3429

**ARCHIVE**  
est 2012

**PROPRIETORS**  
Sara Asche &  
Michelle Gifford

Follow Archive, Elkader on  
Instagram and Facebook  
archive.elkader@gmail.com

vintage & architectural finds, antiques, gifts, iowa wines



## > NORTHEAST IOWA HUNTING

Northeast Iowa is full of opportunities for those who enjoy hunting, whether it is for deer, raccoons, squirrels or many game birds that frequent rural areas.

Whitetail deer are particularly prevalent in Allamakee and Clayton Counties, both of which feature deer herds that rank among Iowa's top 10 according to the Iowa Department of Natural Resources Spotlight Survey conducted last spring. The count showed 6.9 deer per observed survey mile in Allamakee County and 6.1 in Clayton County. Both counties rank behind only a group of counties in south central Iowa. Winneshiek County featured a robust 4.2 whitetails per survey mile while Fayette County had just 1.8, the lowest number in this part of the state.

Those interested in hunting raccoons will see some success in northeast Iowa. The Spotlight survey found 1.4 raccoons per survey mile in Fayette County and 1.1 in Clayton County. Winneshiek County recorded

one raccoon per survey mile and Allamakee County had just 0.7.

Abundance of small game such as pheasants, gray partridge and cottontail rabbit varies in this part of Iowa. The DNR's 2019 August Roadside Survey found the best pheasant distribution in northern Winneshiek County and much of Fayette County. Most of Clayton and Allamakee Counties were rated as having poor pheasant distribution. Gray partridge distribution was best in northern Winneshiek County and the northeastern three quarters of Allamakee County while cottontail rabbit distribution was rated good in most of Clayton, Fayette and Winneshiek Counties and Fair through most of Allamakee County.

The following listing is of public hunting areas only and does not include the Upper Mississippi River Fish and Wildlife Refuge. Be sure to get landowner permission before hunting on private property. Iowa hunting regulations are available at [www.iowadnr.gov/hunting](http://www.iowadnr.gov/hunting).

### ALLAMAKEE COUNTY

#### **Black Hawk Point Wildlife Area**

*Acres:* 320. *Habitat:* Mostly timber, some upland, river. *Species:* Deer, turkey, squirrel, grouse.

#### **Clear Creek Fish and Wildlife Area**

*Acres:* 953. *Habitat:* Mostly timber, some upland, creek. *Species:* Deer, turkey, squirrel, grouse, dove.

#### **English Bench Wildlife Area**

*Acres:* 29. *Habitat:* Floodplain marsh. *Species:* Deer.

#### **Fish Farm Mounds Wildlife Area**

*Acres:* 977. *Habitat:* Timber. *Species:* Deer, turkey, squirrel, grouse, waterfowl.

#### **French Creek Wildlife Area**

*Acres:* 1,674. *Habitat:* Mostly timber, some upland, creek. *Species:* Deer, turkey, squirrel, grouse.

#### **Lansing Wildlife Area**

*Acres:* 1,951. *Habitat:* Mostly timber, some upland. *Species:* Deer, turkey, squirrel, grouse, dove. Non-toxic shot required? - No

#### **Pine Creek Wildlife Area**

*Acres:* 695. *Habitat:* Mostly timber, some upland, creek. *Species:* Deer, turkey, squirrel, grouse, dove.



Embracing every moment

Garden View  
Place

ASSISTED LIVING & MEMORY CARE

800 Darby Dr.

Monona, IA 52159

563-539-4528



# HUNTING

## Pool Slough Wildlife Area

*Acres:* 708. *Habitat:* Mississippi River Floodplain. *Species:* Deer, waterfowl.

## Tahigwa Wildlife Area

*Acres:* 263. *Habitat:* Mostly timber, some grassland. *Species:* Deer, Turkey, Squirrel.

## Upper Iowa River - Iverson Bottoms

*Acres:* 633. *Habitat:* Timber. *Species:* Deer, Turkey Squirrel, Grouse.

## Waterloo Creek Wildlife Area

*Acres:* 1,980. *Habitat:* Forest and upland. *Species:* Deer, turkey, squirrel, grouse, dove.

## Waukon Junction Wildlife Area

*Acres:* 196. *Habitat:* Mississippi River, floodplain marsh. *Species:* Deer, waterfowl.

## Yellow River State Forest - Luster Heights Unit

*Acres:* 764. *Habitat:* Forest. *Species:* Deer, turkey, squirrel, waterfowl.

## Yellow River State Forest - Paint Creek Unit

*Acres:* 5,804. *Habitat:* Forest. *Species:* Deer, turkey, squirrel, waterfowl.

## Yellow River State Forest - Mud Hen Unit

*Acres:* 196. *Habitat:* Forest. *Species:* Deer, turkey, squirrel, waterfowl.

## Yellow River State Forest - Paint Rock Unit

*Acres:* 777. *Habitat:* Forest. *Species:* Deer, turkey, squirrel, waterfowl.

## Yellow River State Forest - Yellow River Unit

*Acres:* 1,048. *Habitat:* Forest. *Species:* Deer, turkey, squirrel, waterfowl.

## CLAYTON COUNTY

### Becker East/West

*Acres:* 108/172. Managed by Clayton County Conservation Board.

### Bloody Run Wildlife Area

*Acres:* 909. *Habitat:* Timber. *Species:* Deer, turkey, squirrel, grouse.

### Buck Creek Park

*Acres:* 97. Managed by Clayton County Conservation Board.

### English Hollow Wildlife Area

*Acres:* 118. *Habitat:* Upland, forest. *Species:* Deer, turkey, squirrel.

### Leonard Wildlife Area

*Acres:* 335. *Habitat:* Upland, forest. *Species:* Deer, turkey, pheasant, dove.

### Motor Mill Access

*Acres:* 76. Managed by Clayton County Conservation Board.

### North Cedar/Sny Magill Wildlife Area

*Acres:* 1,904. *Habitat:* Timber. *Species:* Deer, turkey, squirrel, grouse, dove.

### Volga River Wildlife Area

*Acres:* 256. *Habitat:* Timber, floodplain grassland. *Species:* Deer, turkey, squirrel.

## FAYETTE COUNTY

### Falda Wetlands

*Acres:* 24. Managed by Fayette County Conservation Board.

### Fritz Prairie

*Acres:* 95. Managed by Fayette County Conservation Board.

### Gilbertson Conservation Area

*Acres:* 600. Managed by Fayette County Conservation Board.

### Glovers Creek Wildlife Area

*Acres:* 186. *Habitat:* Timber, trout stream corridor. *Species:* Deer, turkey, squirrel, dove.

### Grannis Creek Wildlife Area

*Acres:* 172. *Habitat:* Timber. *Species:* Deer, turkey, squirrel.

### Shinbone Valley Wildlife Area

*Acres:* 301. *Habitat:* Mostly prairie, some timber, Turkey River Corridor. *Species:* Deer, turkey, squirrel, pheasant.

### Thelman Wildlife Area

*Acres:* 263. Managed by Fayette County Conservation Board.

### Volga River State Recreation Area

*Acres:* 5,867. *Habitat:* Various. *Species:* Various.

## WINNESHIEK COUNTY

The Winneshiek County Conservation Board manages several areas for public hunting.

### Black Oak Hollow

*Acres:* 33. *Habitat:* Upland timber. *Species:* Deer, turkey, squirrel.

### Bluffton Bluffs

*Acres:* 20. *Habitat:* Upland bluffs. *Species:* Deer, turkey.

### Bluffton Fir Stand State Reserve

*Acres:* 93. *Habitat:* Timber, Upper Iowa River. *Species:* Deer, turkey, squirrel, grouse.

### Canoe Creek Wildlife Area

*Acres:* 495. *Habitat:* Timber, Canoe Creek, Upper Iowa River. *Species:* Deer, turkey, squirrel, grouse.

### Cardinal Marsh

*Acres:* 1,173. *Habitat:* Timber, upland, marsh, Turkey River. *Species:* Deer, turkey, squirrel, pheasant, grouse, waterfowl, rabbit, dove.

### Chipera Prairie

*Acres:* 90. *Habitat:* Prairie, grassland. *Species:* Pheasant, rabbit.

### Coldwater Creek Wildlife Area

*Acres:* 313. *Habitat:* Timber, upland, Coldwater Creek. *Species:* Deer, turkey, squirrel, grouse.

### Coon Creek

*Acres:* 1,713. *Habitat:* Timber, upland, Upper Iowa River. *Species:* Deer, turkey, squirrel, grouse.

### Falcon Springs Wildlife Area

*Acres:* 256. *Habitat:* Timber, upland. *Species:* Deer, turkey, squirrel, grouse.

## Kendallville Wildlife Area

*Acres:* 217. *Habitat:* Timber, upland, Upper Iowa River. *Species:* Deer, turkey, squirrel, grouse.

## Malanphy Springs State Preserve

*Acres:* 64. *Habitat:* Timber, Upper Iowa River. *Species:* Deer, turkey, squirrel.

## Marilie Educational Forest Reserve

*Acres:* 20. *Habitat:* Timber. *Species:* Deer, turkey, squirrel.

## North Bear Creek Wildlife Area

*Acres:* 826. *Habitat:* Timber, upland, North Bear Creek. *Species:* Deer, turkey, squirrel, grouse.

## South Bear Creek Wildlife Area

*Acres:* 586. *Habitat:* Timber, upland, South Bear Creek. *Species:* Deer, turkey, squirrel, grouse, dove.

## South Pine Wildlife Area

*Acres:* 217. *Habitat:* Timber, upland, South Pine Creek. *Species:* Deer, turkey, squirrel, pheasant, dove.

## Trout River Wildlife Area

*Acres:* 171. *Habitat:* Timber, upland, Trout River Creek. *Species:* Deer, turkey, squirrel, grouse, dove.

## Trout Run Wildlife Area

*Acres:* 106. *Habitat:* Timber. *Species:* Deer, turkey, squirrel.

## Upper Iowa River - Bolson Bridge

*Acres:* 146. *Habitat:* Floodplain timber, upland, Upper Iowa River. *Species:* Deer, turkey, squirrel.

## Upper Iowa River - Chimney Rocks

*Acres:* 434. *Habitat:* Timber, upland, Upper Iowa River, Coldwater creek. *Species:* Deer, turkey, squirrel, pheasant, dove.

## Upper Iowa River - Loras

*Acres:* 234. *Habitat:* Mostly timber, upland, Upper Iowa River. *Species:* Deer, turkey, squirrel, grouse.

## Upper Iowa River - Malli

*Acres:* 141. *Habitat:* Timber. *Species:* Deer, turkey, squirrel, grouse.

## Upper Iowa River - McCabe

*Acres:* 77. *Habitat:* Mostly timber, some upland, Upper Iowa River. *Species:* Deer, turkey, squirrel, grouse.

## Upper Iowa River - Plymouth Rock

*Acres:* 65. *Habitat:* Floodplain timber, Upper Iowa River. *Species:* Deer.

## Upper Iowa River - Seegmiller

*Acres:* 130. *Habitat:* Timber, upland, Upper Iowa River. *Species:* Deer, turkey, squirrel, grouse.

## Upper Iowa River - TNC Engbretson

*Acres:* 162. *Habitat:* Timber, upland, Upper Iowa River. *Species:* Deer, turkey, squirrel, grouse.

## Upper Iowa River - Upper Dam

*Acres:* 202. *Habitat:* Timber, upland, Upper Iowa River. *Species:* Deer, turkey, squirrel, grouse.



## ▶ TROUT STREAMS

Some of the biggest outdoor draws to northeast Iowa are cold water streams that provide habitat for brook, brown and rainbow trout. While some fish are wild, the Iowa Department of Natural Resources also stocks trout streams between April and November.

Iowa's trout season is open year-round, though the best times to catch them are during insect hatches, many of which occur in the spring.

Reminder: a trout stamp is required in addition to a fishing license in order to fish for trout. Length limits also apply. The daily bag limit for trout is five, with a possession limit of 10.

A great resource for trout fishermen is the Northeast Iowa Resource Conservation and Development group, which had published maps of trout streams for all four counties covered in this guide. Guides are available for purchase or can be downloaded free of charge.

The following information was gathered from the Iowa Department of Natural Resources, [www.iowadnr.gov](http://www.iowadnr.gov), and the Trout Streams of Allamakee, Clayton, Fayette and Winneshiek County Fishing Guides, published and distributed by Northeast Iowa Resource Conservation.

For more information about Iowa's stocking season, including a list of streams that are scheduled for stocking, call the Decorah Fish Hatchery at 563-382-8324, stocking hotline at 563-927-5736 or visit the DNR website at [www.iowadnr.gov](http://www.iowadnr.gov).

### ALLAMAKEE COUNTY

Allamakee County features 15 spring-fed creeks and more than 77 miles of fishable water. It has three of the state's 10 most visited trout streams and one of the state's three trout hatcheries. On average, the Iowa Department of Natural Resources annually stocks approximately 60,000 catchable trout into catchable stocked streams in Allamakee County.

**Note:** Only streams that feature public access are listed in this guide.

**Bear Creek:** Northwest Allamakee County off Tahigwa Drive.

**Length:** ¾ mile. **Stocked:** No. **Amenities:** Trails; Good shoreline fishing.

**Clear Creek:** Stream runs along Highway 9 through Lansing. Public access at County Park off South Road Drive.

**Length:** 2 miles. **Stocked:** Weekly. **Amenities:** Picnic Area; Restrooms; Easy shoreline fishing.

**French Creek:** French Creek Wildlife Management Area, six miles northeast of Waukon.

**Length:** 5.6 miles. **Stocked:** No. **Amenities:** Trails; Good Shoreline fishing.

**Hickory Creek:** One mile southeast of Volney off Hickory Crook Road.

**Length:** 1½ miles. **Stocked:** Weekly, April through October.

**Lansing Wildlife Area Creek:** Lansing Wildlife Area, off Spring Valley Drive.

**Length:** 1.7 miles. **Stocked:** Not regularly. **Note:** Access is challenging to this small, remote stream.

**Little Paint:** Located in Yellow River State Forest, three miles west of Harpers Ferry, just off Highway B25 (State Forest Road).

**Length:** 3 miles. **Stocked:** Weekly, April through October. **Amenities:** Handicap accessible; Picnic Area; Trails; Restrooms; Non-electric Camping; Good Shoreline fishing.

**Paint Creek:** Located in Yellow River State Forest, three miles west of Harpers Ferry, just off Highway B25 (State Forest Road).

**Length:** 11 miles. **Stocked:** Weekly, April through October. **Amenities:** Picnic Area; Trails; Restrooms; Non-electric Camping; Good Shoreline fishing.

**Patterson Creek:** Four miles northwest of Waukon.

**Length:** 1.4 miles. **Stocked:** Weekly, April through October. Some natural reproduction of brown trout. **Amenities:** Good Shoreline fishing.

**Pine Creek:** Located on Pine Creek Management Area, two miles northeast of Sattre on Highway W60 (Balsam Road).

**Length:** 2½ miles. **Stocked:** Annually with fingerling brown trout. **Amenities:** Good Shoreline fishing; Primitive camping.

**Waterloo Creek:** Runs through Dorchester along Waterloo Creek Drive and Highway 76. **Length:** 10½ miles. **Stocked:** Portions stocked weekly, April through October. Wild brook trout populations are present. **Amenities:** Good Shoreline fishing. **Special regulations:** Waterloo creek below Highway 76 is posted catch-and-release only with artificial lure required.

**West Branch French Creek:** Located on French Creek Wildlife Management Area, six miles northeast of Waukon.

**Length:** 4/10 mile. **Stocked:** No. Contains naturally-reproducing populations of brook and brown trout. **Amenities:** Primitive camping allowed. **Note:** Accessible via one-mile walk from parking lot. **Special regulations:** Catch-and-release rule for brown trout; Artificial lures required.

**Wexford Creek:** Five miles north of Harpers Ferry on Highway X52 (Great River Road)

**Length:** 1.4 miles. **Stocked:** Weekly, April through October.



**Fiesta Vallarta**  
Mexican Restaurant

Hours: Sun - Thurs: 11-9 Fri - Sat: 11-10  
Daily Specials  
563-568-0020  
9 East Main St. • Waukon, IA 52162



**Ladybug Landscapes**  
AND DECORAH FLORAL

Let us create a custom flower arrangement for you  
Blooms that show the gift of gratitude  
563-387-0217  
906 Mechanic St. Decorah, IA 52101



## TROUT STREAMS

**Yellow River:** Public access points at Volney Canoe Access, Stonebrook Park and Forest Hills Road.

**Length:** 25 miles. **Stocked:** Fingerling rainbow trout stocked annually. Brown trout reproduce naturally. **Amenities:** Carry-down boat launch. **Note:** With the exception of the access points listed above, fishing via canoe or kayak is the only legal means to trout fish much of the Yellow River without landowner permission.

### CLAYTON COUNTY

Clayton County features 12 spring-fed creeks and more than 28 miles of fishable water. It has three of the state's 15 most visited trout streams and one of the state's three trout hatcheries. On average, the Iowa Department of Natural Resources annually stocks approximately 60,000 catchable trout into catchable stocked streams in Clayton County.

**Bear Creek:** Located at Bixby State Preserve, two miles north of Edgewood just east of Fortune Road.

**Length:** ½ mile. **Stocked:** No. Low density brown trout population is present. **Amenities:** Picnic Area.

**Bloody Run Creek:** Located two miles west of Marquette off Highway 18.

**Length:** 6.5 miles. **Stocked:** Weekly, April through October. **Special regulations:** There is a 14-inch minimum size limit and artificial lure rule on brown trout. **Amenities:** Picnic area; Restrooms; Camping; Good shoreline fishing. **Note:** Clayton County's most visited trout stream.

**Buck Creek:** Located three miles northeast of Garnavillo.

**Length:** 1.7 miles. **Stocked:** Weekly, April, May, June, September and October. **Amenities:** Restrooms, Camping, Good shoreline fishing.

**Ensign Hollow:** Located on Ensign Hollow Wildlife Management Area, approximately five miles north of Strawberry Point. Access is on north side of 322nd Street.

**Length:** 1.3 miles. **Stocked:** No. Supports a moderate-density brown trout population that appears capable of sustaining itself through natural reproduction. **Amenities:** Primitive camping.

**Joy Springs:** South of Alpha Ave. off Highway 3 about three miles west of Strawberry Point in Joy Springs County Park.

**Length:** 0.8 miles. **Stocked:** April through October. **Amenities:** Picnic Area; Primitive camping.

**Maquoketa River (Joy Springs to Backbone Lake):** Area three miles southwest of Strawberry Point off 400th Street is stocked with catchable trout.

**Length:** 8 miles. **Stocked:** Unannounced stocking, April through October. **Amenities:** Good shoreline fishing.

**Sny Magill Creek:** Located in Sny Magill Wildlife Management Area, three miles southwest of McGregor along Keystone Road. **Length:** 5 miles. **Stocked:** April through October. **Amenities:** Good shoreline fishing.

**South Cedar Creek:** Two miles south of Garnavillo. Access via Jigsaw Road. **Length:** ½ mile. **Stocked:** Unannounced, April, May, June, September and October.

**Turkey River & Big Spring Trout Hatchery:** Six miles northwest of Elkader at Big Spring Fish Hatchery.

**Length:** 1 mile. **Stocked:** Twice weekly, April through October. **Amenities:** Restrooms, Camping, Carry-down boat launch, Good shoreline fishing. **Special note:** Big Spring features Iowa's only kids' trout pond for children 15 years old and younger.

### FAYETTE COUNTY

Fayette County features 10 spring-fed creeks and more than 13 miles of fishable water. On average, the Iowa Department of Natural Resources annually stocks approximately 31,000 catchable trout into catchable stocked streams in Fayette County. Of stocked catchable trout, 83 percent are rainbows and 17 percent are brooks.

**Bear Creek:** Located six miles southeast of Fayette off Highway C24 (Kornhill Road). Access from 128th Street.

**Length:** 1.2 miles. **Stocked:** Weekly with brook and rainbow trout. **Amenities:** Good Shoreline fishing. **Note:** Bear Creek is not a coldwater stream and does not support trout populations most summers.

**Brush Creek:** Located in Brush Creek State Preserve, 1½ miles north of Arlington off Highway C2W (90th Street).

**Length:** 1.6 miles. **Stocked:** Annually with brown trout fingerlings. **Amenities:** Picnic Area. **Note:** Access is challenging, as stream is at the bottom of a steep valley.

**Glovers Creek:** Access in Echo Valley State Park, about three miles southeast of West Union. **Length:** 0.8 miles. **Stocked:** Weekly, April through October. **Amenities:** Picnic Area; Trails; Restrooms; Camping; Good Shoreline fishing.

**Grannis Creek:** Located in Grannis Creek Wildlife Management Area, 3 1/2 miles southeast of Fayette off Grannis Road. **Length:** 1½ miles. **Stocked:** Weekly, April through October. **Amenities:** Good Shoreline fishing.

**Mink Creek:** Located on private property, 1½ miles north of Wadena on Bighorn Road. **Length:** 0.9 miles. **Stocked:** Weekly, April, May, September and October. **Amenities:** Good shoreline fishing. **Note:** Located on private property though fishermen are welcome.

**Otter Creek:** Three miles southeast of West Union. **Length:** 2½ miles. **Stocked:** Weekly, April, May, September and October. **Amenities:** Picnic Area, Trails, Restrooms, Camping, Good shoreline fishing.

### WINNESHIEK COUNTY

Winneshiek County features 19 spring-fed creeks and more than 32 miles of fishable water. It has four of the state's 10 most visited trout streams and one of the state's three trout hatcheries. On average, the Iowa Department of

MERCYONE™

New Hampton Medical Center

641-394-4121

Your Best Life. Our One Purpose.

Free Spirit Boutique

Laura Davies Carlson

563-329-0464

LuLaRoe Simply Comfortable

244 Main St.

McGregor, IA 52157





## TROUT STREAMS

Natural Resources annually stocks approximately 76,000 catchable trout into catchable stocked streams in Winneshiek County.

**Bohemian Creek:** 1½ miles east of Protivin  
Length: 0.3 miles. Stocked: Weekly, April through October. Amenities: Picnic Area; Shoreline Fishing.

**Canoe Creek:** East-central Winneshiek County  
Length: 1.8 miles. Stocked: Fingerlings only. Amenities: Primitive.

**Casey Springs:** Access at Sindelar Wildlife Access Area, northwest of Decorah.  
Length: ½ mile. Stocked: No. Special regulation: Brook trout are catch-and-release only. Artificial lures only. Amenities: Primitive.

**Coldwater Creek:** Three miles northwest of Bluffton off Coldwater Creek Road.  
Length: 4 miles. Stocked: Weekly, April through October. Amenities: Shoreline Fishing; Primitive camping.

**Coon Creek:** Seven miles northeast of Decorah.  
Length: 2.6 miles. Stocked: Twice monthly, April through October. Amenities: Trails; Primitive camping.

**Dunning Spring:** North side of Decorah off Ice Cave Road.  
Length: 0.2 miles. Stocked: Annually with brook trout. Amenities: Picnic area; Trails; Good/Excellent Shoreline fishing.

**North Bear Creek:** 2½ miles northeast of Highlandville.

Length: 6 miles. Stocked: Weekly, April through October. Amenities: Shoreline Fishing. Notes: One of two most-visited trout streams in Iowa. Stream contains a naturally reproducing population of brown trout.

**Pine Spring Creek:** 6½ miles north of Decorah off Highway W34 (on Seed Savers Exchange Heritage Farm).

Length: 2 miles. Stocked: No. Has naturally-reproducing populations of brook trout and brown trout. Special Regulations: Brook trout catch-and-release only. Artificial lures only. No alcohol or tobacco use allowed. Amenities: Picnic Area; Trails; Shoreline Fishing.

**South Bear Creek:** Highlandville.

Length: 5.2 miles. Stocked: Weekly, April through October. Amenities: Camping; Shoreline Fishing. Note: One of two most-visited trout streams in Iowa.

**South Pine Creek:** 1½ miles southeast of Sattre.

Length: 2 miles. Stocked: No. Has naturally-reproducing brook trout population. Amenities: Primitive camping.

**Trout River:** Five miles southeast of Decorah off 133rd Avenue.

Length: 5 miles. Stocked: Weekly, April through October. Has self-sustaining brown trout population. Amenities: Primitive camping.

**Trout Run:** South side of Decorah off Trout Run Road.

Length: 2.2 miles. Stocked: Weekly, April through October. Amenities: Picnic Area; Trails; Restrooms; Shoreline Fishing; Handicapped Accessible. Note: Adjacent to Decorah Fish Hatchery.

**Twin Springs:** West side of Decorah at Twin Springs City Park.

Length: ½ mile. Stocked: Weekly, April through October. Has naturally-reproducing population of brown trout. Amenities: Electric and non-electric campsites; Picnic Area; Trails; Playground; Restrooms; Easy-access shore fishing.

**West Canoe Creek:** 5½ miles north of Decorah off Highway W34, 320th Street and Fox Hollow Road.

Length: 3 miles. Stocked: In April, May, June, September and October. Lower 1¾ miles of the creek is not stocked but contains wild brown trout. Amenities: Shoreline fishing.



# Explore MONONA, IOWA



In the Heart of the Driftless Iowa Area

RELAXING • EXHILARATING • EXPERIENCES

- All-season Outdoor Recreational *Fun!*
- Aquatic Center
- All-inclusive Playgrounds
- Butterfly Gardens & Trail
- Dining, Shopping & Services
- Fitness Center
- Full-service Campgrounds
- Guesthouses & Cabins
- Historical Museums
- Nearby Yellow River, Mississippi River, State Parks & National Monument



SPRING



SUMMER



AUTUMN



WINTER

Monona, Iowa is your dream getaway in the Driftless Area region. Like no other region in the world, northeast Iowa's Paleozoic Plateau is a pristine paradise that escaped the flattening effect of glaciation during the last ice age. Its steep forested ridges, deeply-carved river valleys, natural wildlife habitats and flyways, underground caves, spring-fed waterfalls, and cold-water trout streams will supply you with endless relaxing and exhilarating experiences.



FOR MORE INFORMATION

CONTACT: (563) 539-8340

EMAIL: [MONONACHAMBER@NEITEL.NET](mailto:MONONACHAMBER@NEITEL.NET)

WEBSITE: [MONONACHAMBER.COM](http://MONONACHAMBER.COM)







## ▶ PLACES TO STAY

### POSTVILLE

#### Little House on the Farm Bed and Breakfast

892 Pole Line Road, Postville  
(563) 864-7304

#### Pine's Motel

12458 US 18, Postville  
(563) 864-7531

### DORCHESTER

#### Sportsmen Motel

2753 IA-76, Dorchester  
(563) 497-3615

#### Upper Iowa Resort & Rental

578 Lonings Dr, Dorchester  
(563) 568-3263

### WATERVILLE

#### Scenic View Campground

420 Old Sixteen Road, Waterville  
(563) 535-7347

### HARPERS FERRY

#### Andy Mountain Cabins

2335 Andy Mountain Ln, Harpers Ferry  
(563) 586-2123

#### Point of View Bed & Breakfast

416 Luster Heights Road, Harpers Ferry  
(563) 586-2061

### WAUKON

#### Stoney Creek Inn

407 Rossville Road, Waukon  
(563) 568-2220

### LANSING

#### Lansing Loft

61 N Third Street, Lansing  
(563) 419-2115

#### The Stone Home on Main

279 Main Street, Lansing  
(563) 568-9076

#### Thornton House Bed and Breakfast

371 Diagonal Street, Lansing  
(563) 538-3373

### NEW ALBIN

#### New Albin Inn & Suites

205 First Street NE, New Albin  
(507) 450-9728

### CLERMONT

#### Skip-A-Way RV Park-Campground

3825 Harding Road, Clermont  
(563) 423-7338

#### Brick City Inn

122 Mill Street, Clermont  
(563) 423-5976

### WADENA

#### Deer Ridge Campground

13762 D Avenue, Wadena  
(563) 774-2067

#### Mink Creek Lodge

16724 Bighorn Road, Wadena  
(563) 774-3055

### WEST UNION

#### Best Rest Inn & Suites

108 IA 150, West Union  
(563) 422-3537

#### Elms Motel

705 IA 150, West Union  
(563) 422-3841

### OELWEIN

#### Cornerstone Inn & Suites

421 Rock Island Road, Oelwein  
(319) 238-8194

#### Lakeshore RV Resort & Campground

1418 Q Avenue, Oelwein  
(319) 800-9968

#### Super 8 by Wyndham

210 10th Street SW, Oelwein  
(319) 283-2888

### FAYETTE

#### Boarders Inn & Suites by Cobblestone Hotels

515 1/2 W Water Street, Fayette  
(563) 425-0214

### CALMAR

#### Lavender Fields Inn

103 W North Street, Calmar  
(507) 458-5667

#### The Shady Rest Guest House and Shady Shed

1658 US Highway 52  
(563) 379-4132

### SPILLVILLE

#### Taylor Made Bed and Breakfast

330 S Main Street, Spillville  
(563) 379-1962

### MONONA

#### Monona Guesthouse

Listed on airbnb.com and vrbo.com

#### Driftless Manor Getaway

Listed on airbnb.com and vrbo.com

### MARQUETTE

#### Cobblestone Inn & Suites

100 North Street, Marquette  
(563) 873-8900

#### Trickling Waters Retreat

516 Fifth Street Court, Marquette  
(563) 880-4114

### MCGREGOR

#### Backwoods

111 First Street, McGregor  
(563) 873-3150

#### Grumpsters Log Cabins

535 Ash Street, McGregor  
(563) 873-3767

#### Hickory Ridge Bed and Breakfast

17156 Great River Road, McGregor  
(563) 873-1758

#### Hidden Hillow Acreage

778-16726 128th Street, McGregor  
(563) 419-8703

#### Little Switzerland Inn

126 Main Street, McGregor  
(563) 873-2057

#### Stauer House Bed and Breakfast

629 Main Street, McGregor  
(563) 873-2713

#### McGregor Manor

320 Fourth Street, McGregor  
(319) 270-9167

#### Spook Cave & Campground

13299 Spook Cave Road, McGregor  
(563) 873-2144

#### The Frontier Motel

302 First Street, McGregor  
(563) 873-3497

### ELKADER

#### Elkader Inn

24886 IA 13, Elkader  
(563) 245-2020

### Elkader Jailhouse Inn

601 E Bridge Street, Elkader  
(563) 580-0041

### The Twisted Cedar

29971 IA 13, Elkader  
(563) 880-7020

### GUTTENBERG

#### Landing

703 S River Park Drive, Guttenberg  
(563) 252-1615

#### Eagle View Motel & Retreat

115 Lorenz Lane, Guttenberg  
(563) 252-1653

### STRAWBERRY POINT

#### Franklin Hotel

102 Elkader Street, Strawberry Point  
(563) 933-4788

### DECORAH

#### County Inn & Suites by Radisson

2042 IA 9, Decorah  
(563) 382-9646

#### Decorah High Point Cabins

284 Old Spruce Drive, Decorah  
(563) 277-0049

#### Dug Road Inn

601 W Main Street, Decorah  
(563) 382-9355

#### Trout River Log Cabin and Decorah House

2336 Trout River Road, Decorah

#### Fairfield Inn & Suites by Marriott

2041 IA 9, Decorah  
(563) 382-8800

#### Hotel Winneshiek

104 Water Street, Decorah 52101  
(563) 382-4164

#### Quality Inn & Suites

705 Commerce Drive, Decorah  
(563) 293-2335

#### Super 8 by Wyndham

810 IA 9, Decorah  
(563) 382-8771

#### Twin Springs Lodge

2152 Twin Springs Road, Decorah  
(563) 380-0685



**The Franklin Hotel**  
National Historic Building  
102 Elkader St.  
Strawberry Point, IA 52076  
563-933-4788  
Check us out on Facebook







## ➤ BREWERIES AND WINERIES

### MICRO BREWERIES

#### Deb's Brewtopia

106 Cedar Street, Elkader  
www.debsbrewtopia.com

#### Old Man River Restaurant and Brewery

123 A Street, McGregor

#### Pivo Brewery

101 Huber Street, Calmar  
www.pivoblepta.com

#### Pulpit Rock Brewing Company

207 College Street, Decorah  
www.pulpitrockbrewing.net

#### Toppling Goliath Brewing Company

1600 Prosperity Road, Decorah  
www.tgbrews.com

### WINERIES

#### Café Rose Winery

19 North Washington Street, Edgewood  
www.caferoseliowa.com

#### Eagles Landing Winery

127 North Street, Marquette  
www.eagleslandwinery.com

#### Empty Nest Winery

1352 Apple Road, Waukon  
www.emptynestwinery.com

#### Madigan Winery

1532 Lily Road, Lansing  
www.madiganwinery.com

#### Promiseland Winery

39053 Great River Road, Guttenberg  
www.promiselandwinery.com

#### Winneshiek Wildberry Winery

1966 337th Street, Decorah  
www.winery.com

## ➤ PLACES TO EAT

### ALLAMAKEE COUNTY

#### Missfitz Bar & Grill

402 West Chestnut Street,  
Harpers Ferry

#### Coffee on the River

60 S. Front Street, Lansing

#### Fajitas Grill

395 Main Street, Lansing

#### Main Channel Grill

10 S. Second Street, Lansing  
www.mainchannelgrillandlodging.com

#### Miltys

200 Main Street, Lansing

#### NutMeg's Café & Bakery

367 Main Street, Lansing

#### Safe House Saloon

359 Main Street, Lansing  
www.thesafehousesaloon.com

#### Shep's Riverside Bar & Grill

10 S. Front Street, Lansing  
www.shepsontheriver.com

#### The Skinny Dip

2072 Valley Road, Lansing

#### Brick Oven Pizzas Eatery

144 West Greene Street, Postville

#### Club 51

107 North Lawler Street, Postville

#### El Pariente Carniceria

140 West Green Street, Postville

#### The Old Rossville Store

851 Volney Road, Rossville

#### Fiesta Vallarta

9 East Main Street, Waukon

#### Green Valley Getaway

78 16th Avenue NW, Waukon

#### Dave's Gus and Tonys Pizza and Steakhouse

508 West Main, Waukon

#### S & D Cafe

13 West Main Street, Waukon

#### Waukon City Club Bar & Grill

39 West Main Street, Waukon  
www.waukoncityclubbarandgrill.com

#### Yen Hing Dragon

9 Spring Avenue, Waukon

### CLAYTON COUNTY

#### Bill's Boat Landing

101 Front Street, Clayton

#### Clayton Lighthouse

100 North Front Street, Clayton



## PULPIT ROCK BREWING COMPANY

HANDCRAFTED IN DECORAH, IOWA



A destination tap room and brewery focused on high quality and small-batch craft beers. Expect to find a rotating tap list with a wide range of beer styles and a welcoming atmosphere.



## PLACES TO EAT

### Aunt Necee's Pizza & More

100 North Washington Street  
Edgewood

### Café Rose

119 North Washington Street  
Edgewood  
www.caferosesiowa.com

### Franny's

113 North Washington Street,  
Edgewood

### ELKADER

#### 2 Mit Burgers

Corner of Bridge Street and First  
Street, Elkader

#### TD's Sports Bar and Grill

203 South Main Street, Elkader

#### Fennelly's Irish Pub

105 First Street NW, Elkader  
www.fennellysirishtpub.com

#### General Store and More

107 North Main Street, Elkader

#### Elkader Pizzeria

127 North Main Street, Elkader

### Johnson's Restaurant

916 High Street NE, Elkader  
www.johnsonrestaurantelkader.com

### Schera's Algerian-American Restaurant

107 South Main Street, Elkader  
www.scheras.com

### The Treats on Bridge Street Bistro

110 West Bridge Street, Elkader

### Thoma's Dairy Bar

103 North Main Street  
Garnavillo

### Dam Bar

431 South River Park Drive,  
Guttenberg

### Joe's Pizza

608 River Park Drive, Guttenberg

### Kaffee 1858 & Public House

7 Schiller Street, Guttenberg  
www.kaffee1858.com



### Lakeside Ballroom Restaurant and Bar

1202 North Fourth Street,  
Guttenberg  
www.lakesideballroomonline.com

### Picket Fence Café

531 South River Park Drive,  
Guttenberg  
www.claytonridgefarm.com

### Rausch's Cafe

123 North Highway 52  
Guttenberg

### Sodes Green Acre Country Market & Café

7 Goethe Street, Guttenberg  
www.sodesbarandgrill.weebly.com

### Stadium Bar & Grill

915 South Highway 52  
Guttenberg

### Luana Tap

301 Main Street, Luana

### Marquette Café

87 East First Street, Marquette

FRESH, LOCAL, AND MAKING A DIFFERENCE



Gourmet Cupcakes • Weddings  
Gourmet Cakes • Decorative Cakes

120 N Beaumont Rd.  
Prairie Du Chien, WI 53821  
608-306-3350

# WELCOME TO Café Rosé

- Restaurant
- Winery
- Lodging
- And NEW for 2020; Catering!

*Whether you are a visitor to Iowa, looking for a special road trip destination, or just want to enjoy a memorable experience in northeastern Iowa -- Café Rosé is just the place.*

**HOURS**  
Mon-Tues: 10AM-2:30PM  
Wednesday: CLOSED  
Thurs-Friday: 10AM-8PM  
Saturday: 10AM-5PM  
Sunday: CLOSED

119 N Washington St.  
Edgewood IA 52042



## PLACES TO EAT

### **Market Street Buffet - Casino Queen**

100 Anti-Monopoly Way,  
Marquette  
www.casinoqueen.com/  
Marquette/farmers-pick-buffet

### **Backwoods Bar & Grill**

111 First Street, McGregor

### **Café McGregor**

211 Main Street, McGregor

### **Josie's River Queen**

216 Main Street, McGregor

### **Latino's Mexican Restaurant**

213 Main Street, McGregor

### **Maggie's Diner**

28534 Highway 18, McGregor

### **McGregor's Beer and Bratz Garden**

101 Front Street, McGregor

### **Sadie's Sweet Shop**

126 Main Street, McGregor  
www.littleswitzerlandinn.com

### **Bootleggers of Millville**

36835 Noble Road, Millville  
www.bootleggersofmillville.com

### **MJ's Bar & Grill**

103 East Center Street, Monona

### **Quillin's Food Market & Deli**

808 South Main, Monona  
www.quillinsfoods.com

### **TJ's Pizza**

12781 Falcon Avenue, Monona

### **Osterdock Store Restaurant and Bar**

3559 Kiln Road, Osterdock

### **St. Olaf Tavern**

106 Main Street, St. Olaf

### **Back Home Country Cookin'**

119 Commercial Street  
Strawberry Point

### **Country Rose Café**

112 Commercial Street  
Strawberry Point

### **Rod & Cal's Pub & Grub**

109 West Mission Street  
Strawberry Point

### **The Franklin Hotel**

102 East Mission Street  
Strawberry Point  
www.franklin-hotel.net

## FAYETTE COUNTY

### **Alpha Tap**

25248 Johnson Mill Road, Alpha  
(Waucoma)

### **TJ's Pizza**

218 Mill Street, Clermont  
www.tjspizzaclermont.com

### **Brick City Bar & Grill**

305 Mill Street, Clermont

### **Skipaway Quarry Lodge (Seasonal)**

www.skipawayresort.com

### **Turkey River Saloon**

304 Mill Street, Clermont

### **Dotzy's**

240 Center Street, Elgin

### **Elgin Tap**

222 Center Street, Elgin

### **Shrubb's Street Eatery**

128 South Main Street, Fayette

### **Fayette Sweets Café**

128 South Main Street, Fayette  
www.fayettesweets.com

### **Shiner's Bar & Grill**

206 South Main Street, Fayette

### **Jimmy D's**

113 East Main Street, Hawkeye

### **Clete & Connie's**

12 First Street SW, Oelwein

### **Country Cottage Café**

2301 South Frederick Avenue,  
Oelwein  
www.countrycottagecafe.net

### **Hacienda Del Rio**

102 South Frederick Avenue,  
Oelwein

### **Mona's Firepit Pub & Grill**

1 West Charles Street, Suite 7,  
Oelwein

### **Leo's Italian Restaurant**

29 South Frederick Avenue,  
Oelwein  
www.leositaliandining.com

### **Barney's**

201 North Mill Street, Wadena  
www.barneyswadena.com

# TOPPLING GOLIATH

# TAPROOM



31 TAPS • GIFT STORE • FULL RESTAURANT  
OUTDOOR BAR • BREWERY TOURS  
1600 PROSPERITY ROAD, DECORAH, IOWA • TGBREWS.COM



## PLACES TO EAT

### Riverside Bar & Grill

102 Riverview Drive, Waucoma

### Aphea's Pizza Parlor

100½ East Elm Street, West Union

### Barrel Drive In (Seasonal)

204 Highway 150, West Union

### China Kitchen

111 South Vine Street, West Union  
www.chinakitchenmadison.com

### Dairy Queen (Seasonal)

312 West Bradford Street  
West Union  
www.dairyqueen.com

### Tap't Out

122 South Vine Street, West Union

### Tasting Tequila & Food

311 Highway 150 Street  
West Union

### Hooty's

14356 Madison Street, West Union

## WINNESHIEK COUNTY

### Memphis Rae BBQ

115 East Main Street, Calmar

### PIVO Brewery

101 Huber Drive, Calmar  
www.pivoblepta.com

### Subway

304 North Maryville Street,  
Calmar

### The Horseshoe

106 North Maryville Street,  
Calmar

### Whiskey Grove

102 Main Street, Calmar

### Don Jose Family Mexican Restaurant

201 East Water Street, Decorah  
www.donjosedecorah.com

### Ede's Angry Pickle

213 West Water Street, Decorah  
www.edsangrypickle.com

### Family Table

817 South Mechanic Street,  
Decorah  
www.familytabledecorah.com

### Great Dragon Chinese Restaurant

915 Short Street #129, Decorah

### High, Wide and Handsome Pizzeria

105 East Water Street, Decorah

### Hotel Winneshiek

104 East Water Street, Decorah  
www.hotelwinn.com

### Koreana Japanese Restaurant

207 West Water Street, Decorah  
www.koreanadecorah.com

### La Rana

120 Washington Street, Decorah

### Mabe's

110 East Water Street, Decorah  
www.mabespizza.com

### Magpie Café and Coffeehouse

202 West Water Street, Decorah  
www.mymagpiecoffee.com

### McCaffrey's Dolce Vita

2149 Twin Springs Road, Decorah  
www.mcdolvevita.com

### Old Armory BBQ

421 West Water Street, Decorah  
www.oldarmorybarbeque.com

### Pizza Ranch

212 College Drive, Decorah  
www.decorahpizzaranch.com

### Rubaiyat Restaurant

117 West Water Street, Decorah  
www.rubaiyarestaurant.com

### Stone Hearth Inn

811 Commerce Drive, Decorah  
www.stonehearthdecorah.com

### T-Bock's

206 West Water Street, Decorah  
www.tbocks.com

### Toppling Goliath Brewing Co.

1600 Prosperity Road, Decorah  
www.tgbrews.com

### The Fort

100 Oak Street, Fort Atkinson

### The Zipper

1225 Highway 150, Fort Atkinson

### Bambino's

102 North Lydia Street, Ossian

### Shooters Bar & Grill

108 West Main Street, Ossian

### Two Trees Pizza

115 East Main Street, Ossian

### The Fireman's Inn

660 County Street, Ridgeway

*The best of  
small town living'*

Experience our gourmet burgers and sandwiches, vast whiskey selection, and speciality mixed drinks...including our infamous Moscow Mules.



**DOTZY'S**  
RESTAURANT & SALOON  
240 Center St, Elgin, IA  
(563) 518-6061

ChefMichaelEllison.com/Restaurants









# MAKE AN IMPACT

Our Custom Printing Department has a wide array of products & services to grow your business or make your event unforgettable. Whether you are looking for unique business cards, promotional products or fundraising options, it's important to get the quality products you want.

## Professional Branding

- Logo Design
- Business Cards
- Letterhead
- Envelopes
- Postcards
- Forms
- Notepads
- Post-It® Notes
- Folders

## Promotional & Fundraising

- Signs
- Banners
- Raffle Tickets
- Calendars
- Saving Cards
- Magnets
- Window Clings
- Coupons
- Gift Certificates

## Organizations & Businesses

- Event Tickets
- Flyers
- Posters
- Brochures
- Newsletters
- Rack Cards
- Postcard Mailers
- Stickers
- Menus



**LOW PRICES | RELIABLE SERVICE | OUTSTANDING QUALITY**

Contact us for your  
**FREE No-Obligation Quote!**



**Nikki Vega**  
Marketing Consultant  
**(563) 864-3333**  
neisales.map@gmail.com

**Crystal Schultz**  
Marketing Consultant  
**(563) 539-4554**  
mononasales.map@gmail.com

[www.MidAmPublishing.com](http://www.MidAmPublishing.com)